



# MailStore

## SERVER

MailStore Server is the leading email archive for small and medium-sized businesses

- Ensure the safety and availability of all emails permanently and centrally
- Archive emails for eDiscovery, internal investigations and to comply with legal requirements
- Permanently reduce the workload of email servers
- Effective protection from data loss
- Independence from insecure PST files
- Simplify backups of the email server
- Easy disaster recovery of emails
- Browse emails in fractions of a second



With MailStore Server you receive a certified solution offering audit compliant archiving of all emails.



# Advantages for Your Business

## Store Emails Permanently, Centrally and Securely

MailStore Server stores all company emails in a central and secure archive ensuring the safety and availability of information for years to come.

## Email Compliance

MailStore Server has been audited according to the German IDW Auditing Standard 880, Issue and Use of Software Attestation Reports (IDW AuS 880). The IDW is a Member of the International Federation of Accountants. The Standard IDW AuS 880 corresponds to the requirements of Sarbanes-Oxley Audits (SOX) which reviews controls, policies and procedures during a Section 404 audit. The audit along IDW AuS 880 considered aspects like integrity, accuracy and auditability of software products.

## Browse Emails in Fractions of a Second

All users can browse their emails and file attachments within fractions of a second using client software for Windows, a seamless integration into Microsoft Outlook or any internet browser. MailStore's full text search also enables users to browse the contents of any file attachments (e.g. Microsoft Word or Adobe PDF files).



## Reduce the Workload of Email Servers

Email servers such as Microsoft Exchange Server are generally unable to manage the ever increasing volume of emails reliably and in a way that is economically sensible. As a result, high expenses for administration and necessary hard- and software upgrades arise. To significantly reduce the workload of these email servers, MailStore Server can delete emails from the mailboxes directly after archiving according to predefined rules.

## Protection from Data Loss

Important emails can be lost because of technical failures, accidental or intentional deletion or incomplete backups. With MailStore you can safely eliminate these risks.

## Simplify Backups of the Email Server

Backups of email servers take a considerable amount of time and money, especially when dealing with large amounts of data. By deleting historic emails from the mailboxes after archiving, the amount of data to be backed up can be reduced significantly. From the archive itself, incremental backups can be created fast and effortlessly.



## Easy Disaster Recovery of Emails and Continuous Availability in the Event of Damage or Loss

In the event of damage or loss, restoring a full backup of the email server is a complex and expensive process. From the archive, on the other hand, the emails of entire mailboxes can be restored with a single click of the mouse. In addition, if the email server fails, all emails in the archive remain fully accessible; users can restore emails from the archive themselves.

## Eliminate Unsafe PST Files

Often times, a large portion of a company's historic email is stored in unsafe PST files that are dispersed among the user machines. With MailStore Server, even these emails can be archived, thus permanently resolving the dependency on PST files.

*"Conclusion: Mailstore 4 wins over users with its large range of functions. Especially appealing are the numerous import features, the flexible configurability, and the option to consolidate completely different mail accounts in the archive for each user."*

**network  
Computing**  
Help - Needs - Technik | For CEO - CFO - CSO

# Flexible Archiving

MailStore Server supports many different email systems and archiving methods.

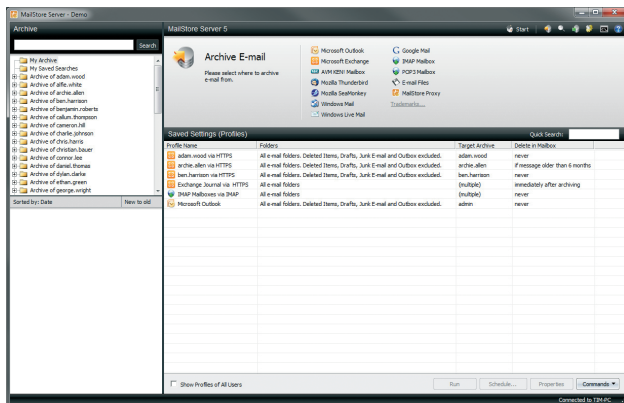
- Archiving of existing mailboxes and public folders, and automatic archiving of all incoming and outgoing emails
- After archiving, emails can be deleted from the mailboxes according to predefined rules
- The folder structures created by users are also applied in the archive
- No changes are made to the configuration of the email server
- No administrative access to the email server is required

## Archiving of Microsoft Exchange Server

- Compatible with Exchange Server 2003, 2007 and 2010 incl. SBS and Essential Business Edition
- Compatible with Hosted Exchange mailboxes

## Archiving of any Email Server

- For all IMAP and POP3-compatible email server
- Examples: MDAemon, Novell GroupWise, Kerio Connect, Postfix, Scalix, Zarafa



## Archiving of Emails from Decentralized Storage Locations

Emails can be archived from the locally installed email clients of the users.

MailStore supports Microsoft Outlook 2000, XP, 2003, 2007, 2010, Outlook Express 6.0, Microsoft Windows Mail, Windows Live Mail and Mozilla Thunderbird.

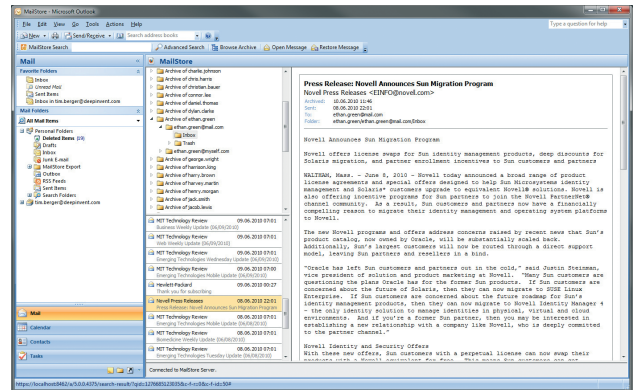
## Archiving of Email Files

- PST files
- MSG files
- EML files
- MBOX files

# Access to the Archive

All users can access and browse their archived emails within fractions of a second. There are several ways to access the archive:

- Access via intuitive MailStore Client software
- Access via seamless integration into Microsoft Outlook
- Access via any internet browser



## Full Text Search of Emails and File Attachments

With MailStore Server's fast and powerful full text search, you can browse any file attachments (e.g. Microsoft Word or Adobe PDF files) and save complex queries for reuse.

## Locating Emails via the Original Folder Structure

MailStore Server applies the original folder structure of the source to the archive. This means that folders created in Microsoft Outlook or in an Exchange mailbox, for example, can be found unchanged in the archive as well.

## Teamwork

Depending on the assignment of permissions, individual users can also access parts of the archive allocated to other users.

## Email Recovery via 1-Click-Restore

Individual emails or entire mailboxes can be restored from the archive with a click of the mouse.

## Export and Recovery of Archived Emails

MailStore Server offers a variety of ways to export emails from the archive allowing for a versatile use of the archived data and providing independence from specific formats and technologies for years to come. Supported export destinations include:

- Microsoft Outlook, Outlook Express and Windows Mail
- Microsoft Exchange mailboxes
- IMAP mailboxes
- Forwarding via SMTP
- CDs/DVDs (RFC822 EML and MSG files)
- File system (RFC822 EML, MSG and PST files)



## Storage Technology

MailStore uses a fully integrated, encrypted and scalable storage technology; it can easily process even large amounts of data and serve companies with over 1,000 mailboxes and users without reaching any limits of performance or capacity.

- Powerful, efficient and infinitely scalable
- No licensing fees for Microsoft SQL Server or any other database system
- For any amount of data and any number of users



Unlike other archiving products, MailStore does not store data in a single database which will eventually reach its limit of performance. Instead, a MailStore archive can be comprised of any number of independent archive units providing flexible backup and storage management.

[www.mailstore.com](http://www.mailstore.com)

## Proven in the Open Market

MailStore Server is successfully used in over 3,500 businesses – many with more than 1,000 mailboxes and users. In addition, many components of the MailStore technology are field-tested daily by over one million private users of the free MailStore Home software.

## System Requirements

- All necessary components are integrated in the setup
- Installation on an existing server is possible
- Installation parallel to the email server is possible (but not a requirement)
- Microsoft SQL Server is not required
- Installation in VMware, Virtual Server and Terminal Server environments is possible

### Supported Operating Systems (32 and 64 bit Versions)

- Microsoft Windows 2000 Service Pack 4
- Microsoft Windows XP Service Pack 2 or higher
- Microsoft Windows Vista
- Microsoft Windows 7
- Microsoft Windows Server 2003 (incl. SBS)
- Microsoft Windows Server 2008 (incl. SBS and R2)
- Microsoft Windows Home Server Power Pack 2 or higher

