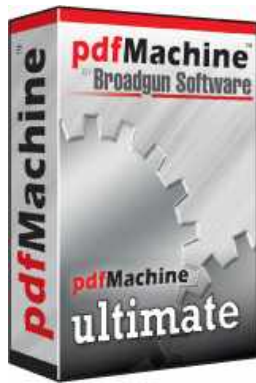


pdfMachine - produces PDF files with ease!

PDF enabled software is a vital component for every desktop. PDF or Portable Document Format is a widely used file format originally developed by Adobe. This format is rapidly becoming the defacto standard for publishing on the web.

Our pdf writer pdfMachine converts a print stream from an application directly into a PDF. Once you have installed the pdf writer, open your document that you want to convert, then click "print", select the "Broadgun pdfMachine printer" and that's it!



- pdfMachine is easy to install
- Simple to use - one click only!
- Runs on Windows

The Benefits of PDF

Integrity:

PDF documents generated by pdfMachine, when printed or viewed, maintain the integrity of all formatting in the original document. PDF files preserve documents formats independent of software, hardware, or operating system used to generate the original file. They can be opened, read and printed by many free PDF readers available on the web, and viewed on operating systems such as Windows, MacOS, and Unix variants.

Technology:

PDF format is the best document format for long-term digital archival. Often software becomes obsolete, rendering some documents unreadable by current technology. Widely published formats, such as PDF, are more future proof than proprietary formats such as MS Word. In 50 years time, even if PDF's are not used anymore, all you need is the PDF specification and you can have a viewer developed to read your documents.

Searchable:

PDF has the ability to store text in a searchable form.

Browsers:

PDF files can be viewed within Netscape and Internet Explorer. These files can then be saved for off-line use or printed. This makes for easy use within an intranet or website.

Colour and Size:

PDF files enable sharp, colour-precise printing on most printers with precise onscreen colour match regardless of monitor brand. Users can magnify documents up to 800% without the loss of clarity in text or graphics. PDF files can be optimized and are often smaller than conventional document formats.

pdfMachine Office

pdfMachine office gives you powerful PDF capabilities

- Print to PDF
- Email PDF
- Multilingual fonts
- Small File Sizes
- PDF Editing
- Sticky Notes / Comments
- PDF Stationery
- Watermarks
- Security Encryption
- Active URLs
- Hyperlinks
- N-Up Printing
- Office and Explorer Toolbar
- Bookmark Editing
- Set Next Action
- Set Document Title, Author, Keywords Info
- Scanning to PDF
- Network Installation
- Custom toolbar
- Print Profiles

**Platforms:**

Windows 7 / XP / 2003 / Vista / 2008
includes x64 Platforms

pdfMachine Pro

pdfMachine Pro has all the features of **pdfMachine Office** plus the ability to:

Mark-up a PDF

- Place text boxes, text ovals, lines and arrows on a PDF.
- Insert voice annotations.
- Insert text and image stamps.

Digitally sign any PDF

- Easily sign PDF documents from the pdfMachine menu.
- Have your selected signature automatically applied to PDF's you produce.
- Use certificates managed with Windows.
- Create your own self signed certificates.
- Time Stamped PDF's - have your signed PDF's automatically time stamped by our Time Stamp Authority.
- Create "Certified" PDF's.
- Drag the signature to any position on the page.
- Set the signature appearance including images, reason, location, dates and signature details.
- Or leave the signature invisible.
- Server signed PDF's - you don't even need to own a certificate as you can use ours.

Embed / attach any type of file to a PDF

Platforms:

Windows 7 / XP / 2003 / Vista / 2008
includes x64 Platforms



Try it with our free pdfMachine download. To use pdfMachine without the advertisement being generated, you need to purchase a license and register the software. If you already own a version of pdfMachine, you can purchase an upgrade

What is a Time Stamp Authority (TSA) ?

A time-stamping service supports assertions of proof that a document existed before a particular time. This is all done in a cryptographically secure manner.

Put simply, if you can trust the time of a TSA, then you can trust the document signing time in the PDF thus proving the existence of a document at a certain time.

What is a Certified PDF?

A Certified PDF is a digitally signed PDF that makes its signed status more obvious. When a certified PDF is viewed in Adobe Reader, a dialog box will automatically appear showing the document status, such as the following:



pdfMachine Ultimate

pdfMachine ultimate has all the features of **pdfMachine pro** plus the ability to:

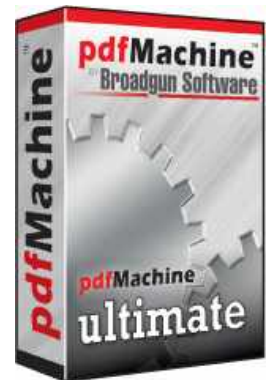
Use Microsoft Word mail merge to email personalized form letters as PDF attachments.

Now instead of a .doc file attached to emails, you can have a .pdf file.

- Easily start the mail merge from the pdfMachine toolbar.
- Use your existing mail merge data sources.
- Use your existing mail merge fields and macros.
- Set the subject and body text of your email.
- Send using any of the many pdfMachine supported email interfaces.
- Let the mail merge run unattended and check the results report when it finishes.

Parameter parsing

Control the PDF generation pipeline from instructions embedded into the content of the document. This allows the text content of the document to activate pdfMachine features as the print occurs.



Platforms:

Windows 7 / XP / 2003 / Vista / 2008

includes x64 Platforms

Microsoft Word / 2003 / 2007 / 2010

pdfMachine Ultimate

Parameter Parsing/ Embedded Commands

Version 14.XX

Parameters:

<u>Email</u>	Email sending
<u>SavePDF</u>	Save to a file name
<u>AppendPDF</u>	append a PDF
<u>InsertPDF</u>	insert a PDF
<u>OpenPass</u>	Set the Open password
<u>PermPass</u>	Set the change permissions password
<u>Stationery</u>	Set the PDF stationery
<u>DigSig</u>	Apply the digital signature
<u>Embed</u>	Embed a file
<u>InsertImage</u>	Insert an image
<u>SplitPDF</u>	Split a large PDF into smaller PDF's
<u>bm</u>	Set a bookmark
<u>print</u>	Print PDF to another printer
<u>Examples</u>	

Introduction

Parameters or "Embedded Commands" can be entered into the originating document to instruct pdfMachine on particular actions to take when generating the PDF.

e.g. If the text:

```
#_ savePDF C:\tmp\savedfile.pdf _#
```

appears in a Word document and it is printed to pdfMachine with parameter parsing enabled the file will be automatically saved to c:\tmp\savedfile.pdf and no pdfMachine user interface will be displayed.

If parameter parsing is enabled, pdfMachine will parse the PDF file for the specified parameters listed above and described in detail below. These parameters control both the content of the generated PDF file (eg inserting images, replacing keywords with text) and the way that pdfMachine works (eg setting passwords, emailing the PDF, saving the PDF).

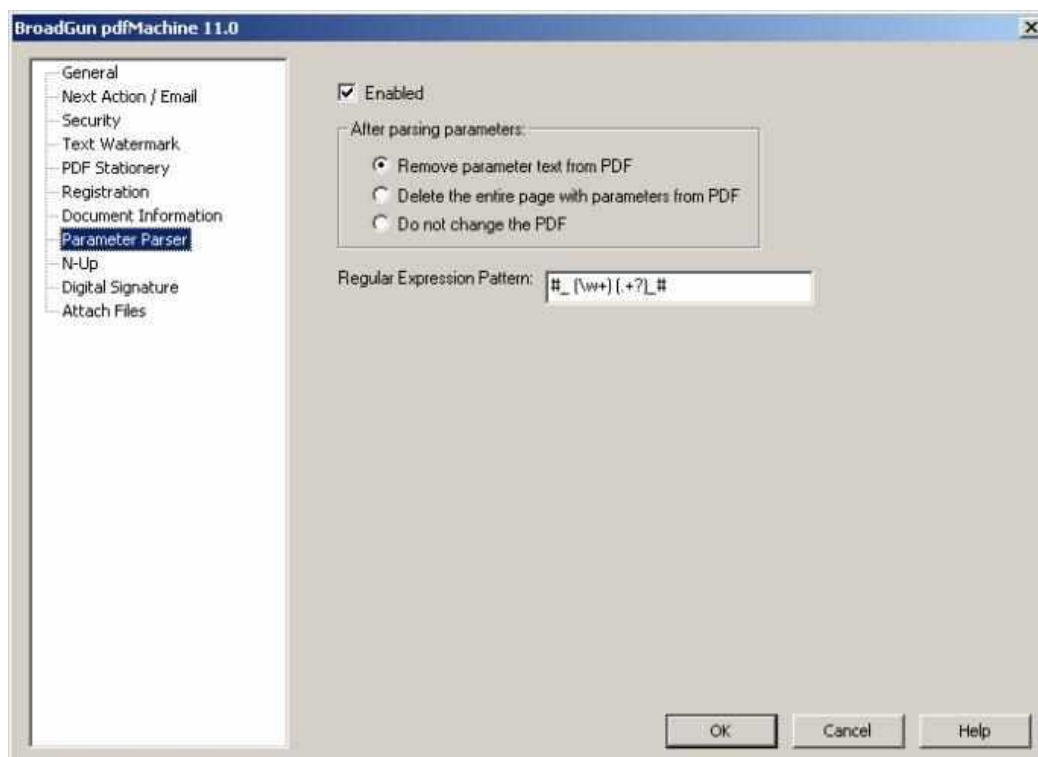
This is particularly useful for integration with legacy software to do "mail merge" type operations.

WARNING: Parameters in pdfMachine can be very powerful and complex. Please test each configuration thoroughly before using in a production environment.

How to use Parameter Parsing

1) Turn it on

Check the "Enabled" check box in the Parameter Parser tab of the pdfMachine Options dialog to turn parameter parsing on. Enabling parameters will slow processing of pdfMachine down a little, so don't do it unless you need them.



After parsing the parameters pdfMachine will either remove from or leave in the parameters from the resultant PDF file as selected by the radio buttons in this dialog.

The parameter parsing is done using the "Perl-Compatible Regular Expressions" library developed by Philip Hazel. A regular expression is a pattern that is matched against a subject string from left to right. For a detailed explanation of regular expressions, please read:

<http://home.att.net/~robertdunn/Papers/RegExpSyntax.html>

The default regular expression used is: `#_ (\w+) (.+?)_#`

We recommend this regular expression is not changed without a good understanding of regular expressions. Should this accidentally be changed it can be corrected using the default regular expression described on this page.

If you need to change the regular expression, it is stored under the following registry entry:
HKCU\Software\pdfMachine\RegExp

The default regular expression will allow parameters to be entered into the originating document in the following format:

`#_ parameter argument(s) _#`

Note: A parameter and an argument list for that parameter must both be specified, even if the arguments are not used, at least 1 argument must be present. For example:

A valid entry for setting a digital signature in the PDF file is :

`#_ digsig 1 _#`

An invalid entry for setting a digital signatures is: `#_ digsig _#`

2) Create the originating document with appropriate parameters

The parameters are not case sensitive. Choose from the parameters listed below:

Sending an email with the PDF Attachment

The following parameters can be used to cause pdfMachine to email the resultant PDF. See example.

Parameter	Description
Email	<i>Arguments:</i> Comma separated list of email addresses to send to. e.g. #_ email dave@broadgun.de _#
EmailCC	<i>Arguments:</i> Comma separated list of email addresses to cc to. e.g. #_ emailCC dave@broadgun.de _#
EmailBCC	<i>Arguments:</i> Comma separated list of email addresses to bcc to. e.g. #_ emailBCC dave@broadgun.de _#
EmailSubject	<i>Argument:</i> Subject of email e.g. #_ emailSubject Your invoice is attached _#
Emailbody	<i>Argument:</i> Text body of email. May span across multiple lines. e.g. #_ emailBody Hi, Please find attached a very useful PDF file. Best Regards, The Boss. _#
EmailAttachmentName	<i>Argument:</i> Name to use for attached PDF file e.g. #_ emailAttachmentName invoice.pdf _#
MergeField	<i>Arguments:</i> fieldname value The MergeField parameter allows the contents of the Email to be customized to a finer detail. That is, the subject, body and attachment name can be set in the pdfMachine options screens. The {} characters can be used to define field names within these and then the MergeField parameter used to set these field names. See example. MergeField can only be used when the Email parameter is set. Takes a fieldname to replace, and the value to replace that fieldname with. The mergeField is applied to the EmailSubject, EmailBody and EmailAttachment name settings. e.g. #_ MergeField first_name Fred _# This will replace all occurrences of {first_name} in the subject, body or attachment name settings, with the word Fred.

Save the PDF File

The following parameter causes pdfMachine to automatically save the resultant PDF file to the specified location.

Parameter Description

Argument: Path to the location to save the PDF file

SavePdf

e.g. #_ SavePdf C:\savedFileHere.pdf _#

Inserting or Appending PDF Files

The following parameters insert or append files into the resultant PDF file.

Parameter	Description
AppendPdf	<p><i>Argument:</i> Path to the PDF file that is to be appended.</p> <p>e.g. #_ AppendPDF c:\somefile.pdf _#</p> <p>Multiple appendPdf parameters can appear in the file which will result in multiple PDF's being appended.</p> <p>See example.</p>
InsertPdf	<p><i>Argument:</i> Page number after which to insert (0 to insert at the start of file), path to the PDF file to insert.</p> <p>See example.</p>

Encryption

The following parameters cause pdfMachine to enable encryption and to set the appropriate passwords in the resultant PDF file.

Parameter	Description
OpenPass	<p><i>Argument:</i> Password required to open the document (a.k.a. user password).</p> <p>e.g. #_ OpenPass mysecret _#</p> <p>NOTE: Set the other encryption parameters in the pdfMachine options screens.</p>
PermPass	<p><i>Argument:</i> Permissions password (a.k.a. owner password).</p> <p>e.g. #_ PermPass mysecret _#</p> <p>NOTE: Set the other encryption parameters in the pdfMachine options screens.</p>

Stationery

Parameter	Description
Stationery	<p>Arguments: pages drawn path</p> <p>pages: all first</p> <p>drawn: below above</p> <p>path</p> <p>e.g. #_ Stationery all above c:\stationery.pdf _#</p> <p>Optionally specify which pages the stationery is applied: "all" (default) applies the stationery to all pages of document. "first" applies it to first page only.</p> <p>Optionally specify how the stationery is drawn: "below" (default) draws the stationery underneath the page text. "above" draws the stationery above the page text.</p> <p>Path to PDF file to be used as stationery.</p>

Digital Signature

The following parameter causes pdfMachine to Inserts the selected digital signature at the current place in the file.

Parameter	Description
DigSig	<p>Argument: visible enabled</p> <p>visible: show noshow</p> <p>enabled: on off</p> <p>e.g. #_ DigSig noshow _#</p> <p>NOTE: the DigSig parameter <i>*must*</i> be followed by at least one other piece of text so that the regular expression can find it. Anything other that the parameters shown above are ignored, so it is fine to just put something simple like '1'. e.g. #_ DigSig 1 _#</p> <p>NOTE: Set up the other signature details in the pdfMachine options.</p> <p>Optionally specify if signature is visible: "show" (default) shows the signature appearance as specified in the options settings. "noshow" document is signed but has no signature picture or words.</p> <p>Optionally specify if signature is done: "on" (default) signs document. "off" does not sign document. Allows you to override digsig being enabled in the options.</p>

Files Attached / Embedded within the PDF

The following parameter causes pdfMachine to attach file(s) to the resultant PDF file. The attached files can be seen in the attached files list in Acrobat Reader 6 and 7.

Parameter	Description
embed	<p><i>Argument:</i> Path of the file to be embedded.</p> <p>e.g.</p> <pre>#_ embed C:\afile.pdf _# #_ embed C:\somefile.pdf _#</pre> <p>Call embed multiple times to embed multiple files. See example.</p>

Insert Image

The following parameter causes pdfMachine to insert images into the resultant PDF file.

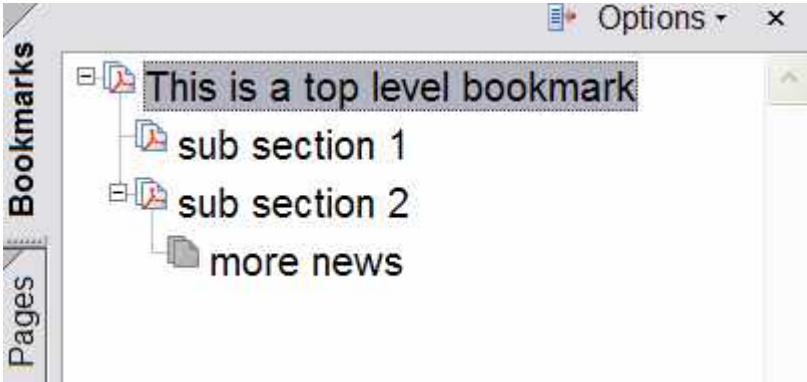
Parameter	Description
InsertImage	<p><i>Arguments:</i> width height path</p> <p>e.g. #_ InsertImage 100 100 C:\somefile.jpg _#</p> <p>width optionally specify the width in points for the picture in the PDF file. height optionally specify the height in points for the picture in the PDF file. path path to the image file.</p> <p>Note: 1 point = 1/72th inch</p> <p>InsertImage can be called more than once per page.</p>

Split Document

Parameter	Description
SplitPDF	<p><i>Argument:</i> dummy argument to help regular expression parsing</p> <p>e.g. #_ SplitPDF 1 _#</p> <p>Note the SplitPDF parameter must be followed by some other text, which is '1' in this case.</p> <p>Splits document at the end of the current page. This should be used with extreme caution, as it may result in multiple emails being sent for a single print job.</p> <p>Please be sure you do adequate testing to ensure the emails are as you</p>

	<p>wish.</p> <p>See example.</p> <p>Make sure that there is no more that one SplitPDF command on a single page.</p> <p>This can be useful for integrating with a legacy application that creates one big print job with each customer statement on a new page.</p> <p>e.g. An accounting application may print out a number customer invoices, one after the other in one big print job. Normally this would generated 1 large PDF. However, using a combination of "SplitPDF" and "email" parameters each customer would be emailed a unique invoice belonging to them.</p>
--	---

bookmark

Parameter	Description
bm	<p><i>Argument:</i> bookmark name\sub bookmark name</p> <p>A back slash separated list of heading names, forming a table of contents or bookmark hierarchy.</p> <p>Bookmarks provide a table of contents and usually represent the chapters and sections in a document.</p> <p>Bookmarks appear in the navigation pane of adobe reader. When a bookmark is clicked, the reader will be presented with the section where the "bm" command was placed.</p> <p>e.g</p> <pre>#_ bm This is a top level bookmark _# #_ bm This is a top level bookmark\sub section 1 _# #_ bm This is a top level bookmark\sub section 2\more news _# <BR&NBSP;&NBSP; level bm</pre> <p>Produces PDF with a bookmarks window in Adobe Reader:</p> 

Print

Parameter	Description
print	<p><i>Argument:</i> printer name</p> <p>Used to print to a secondary printer.</p> <p>This could be useful if a hardcopy is desired as well as the PDF. If the word "default" is used for the printer name the default printer is used.</p> <p>e.g 1 - Print to a specific printer name</p> <pre>#_ print HP Office Jet v49 _# <BR&NBSP;&NBSP; level bm</pre> <p>e.g 2 - Print to the default printer</p> <pre>#_ print default _#</pre>

Examples

Sending an email

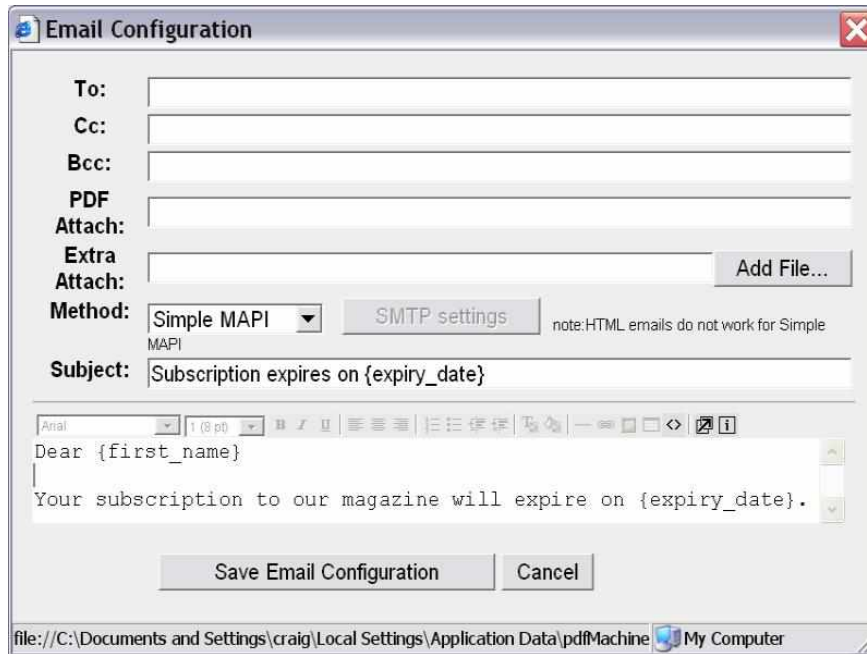
Print the following text to pdfMachine to send an email to user@broadgun.com, with the attachment called "mypdf.pdf" and the subject "pdfMachine is great" and the body "Hi, Please have a look at the attachment." (spread over 2 lines).

```
#_ email user@broadgun.de _#  
#_ emailsubject pdfMachine is great _#  
#_ EmailAttachmentName mypdf.pdf _#  
#_ Emailbody Hi,  
Please have a look at the attachment. _#
```

This is the attachment text, it will appear in the PDF.

Sending an email with the PDF Attachment using the MergeField parameter

Set the pdfMachine options to have the email configuration as below:



Print the following text to pdfMachine to send an email to john@yourserver.de, with the attachment called "subscription.pdf" and the subject "Subscription expires on 1st March 2006" and the body "Dear John Your subscription to our magazine will expire on 1st March 2006" (spread over 2 lines).

```
#_ email john@yourserver.de _#  
#_ EmailAttachmentName subscription.pdf _#  
#_ Mergefield expiry_date 1st March 2006 _#
```

Appending PDF file

Print the following text to pdfMachine to append the contents of the file 'one.PDF' and 'two.pdf' into the resultant PDF.

```
#_ appendPdf c:\one.pdf _#  
#_ appendPdf c:\two.pdf _#
```

Put any text here, this forms the main pdf.

Inserting PDF file

Print the following text to pdfMachine to append the contents of the file otherPDF.PDF into the resultant PDF at the start of the file.

```
#_ insertPDF 0 My Documents\otherPDF.pdf _#
```

Put any text here - this will appear after the contents of the file otherPDF.pdf

Attaching/Embedding files

Print the following text to pdfMachine to embed files in the resultant PDF.

```
#_ embed c:\somefile.txt _#  
#_ embed c:\anotherfile.txt _#
```

Put any text here - this will appear as the contents of the PDF file. The PDF file will have an "attachments" window containing the two text files.

Splitting single print job into multiple emailed documents - SplitPDF

Print the following text to pdfMachine to send two emails.

```
#_ email john@yourserver.de _#  
#_ emailsubject hello, here is the news for john _#  
#_ splitPDF 1 _#
```

Customer Name: John
Amount Owed: \$100
Date Due: 23 Jan 2006

..
..

(make sure there is a page break before this next text)

```
#_ email dave@yourserver.de _#  
#_ emailsubject hello, here is the news for dave _#  
#_ splitPDF 1 _#
```

Customer Name: Dave
Amount Owed: \$200
Date Due: 23 Jan 2006

pdfMachine SDK

Overview

pdfMachine SDK is a Software Development Kit (SDK) for PDF conversion and manipulation. (pdfMachine SDK was previously called pdfServMachine.)

- COM API, .net webservice and command line.
- Easily convert your HTML, text and Microsoft Office (Word, Excel, PowerPoint) files to PDF.
- Integrate PDF generation into virtually any application that can print.
- Manipulate existing PDF documents.
- Add digital signatures to PDF documents. Supports local and server based signature calculation.
- pdfMachine SDK runs on Windows NT/2000/XP/2003/Vista. Microsoft Office has to be installed to be able to convert MS Office files to PDF.



pdfMachine Demo - Create PDF Free :

pdfMachine demo is our free trial version of pdfMachine.

pdfMachine demo allows unrestricted use of all features.

A small pdfMachine advertisement is placed at the bottom of each page of the generated PDF.

To use pdfMachine without the advertisement being generated, you need to purchase a license and register the software.

Platforms:

Windows 7 / XP / 2003 / Vista / 2008

includes x64 Platforms



pdfMachine - Features - Create PDF Files:

Platforms:

Windows 2003 / 2008 / XP / Vista / 7
(all x64 platforms are supported)

Print to "Broadgun pdfMachine" - Easy and quick:

pdfMachine is simple and fast with no complicated options. Our pdf writer pdfMachine converts a print stream from an application directly into a PDF. Once you have installed the pdfMachine pdf writer, open your document that you want to convert, then click "print", select the "Broadgun pdfMachine" printer and that's it!

PDF Editing:

Easily insert, append, rotate, delete and rearrange pages within a PDF file.

Sticky notes / comments:

You can edit and create comments to be placed on the pdf. This is a great workflow review tool.

Text highlighting / Underlining / Strikeout:

Text mark-up, shape drawing, lines and arrows. Text highlighting, underlining and strikeout.

File open menu option:

You can now open and assemble any PDF file, not just those created by pdfMachine.

Voice annotations:

If you have a microphone on your PC you can easily add voice annotations to a PDF

Custom stamp annotations, text annotations:

Add your own stylish custom stamp annotations.

Multilingual font support:

The latest version of pdfMachine supports all Asian languages, Hebrew, Arabic and others.

Mail Integration:

Integrates with MAPI compliant mail programs such as Outlook, Outlook Express and Netscape to ease the sending of PDF's via email. Supports Simple MAPI, Extended MAPI, Outlook and SMTP. HTML style emails can be sent with PDF attachments.

Small File Sizes:

The PDF files created by PDF machine are quite small in comparison to original documents. Text in images are encoded as text in the PDF where possible, to reduce file size, and allow the text to be searched for in the PDF

PDF Stationery:

Use existing PDF files as you would pre-printed stationery. The first page of an existing PDF file is merged on to every page of your new PDF file. This is a great way to get those legacy applications producing great looking customised PDF files.

Text and image watermarks:

Text and image watermarks can be placed on each page of the PDF file. Transparent and gradient backgrounds are supported.

Security:

Implements PDF 40 bit and 128 bit encryption. Documents can be password protected - rights for printing/ copying/ modifying can be awarded.

Active URLs:

PDF hyperlinks are auto-generated from web URLs and email addresses. This is in addition to the generation of active urls from hyperlinks and bookmarks within Word and PowerPoint.

Hyperlinks preserved from within Internet Explorer :

From Internet Explorer hyperlinks hidden behind text and images such as this are preserved in the PDF!

N-Up Printing:

Shrink several pages onto one page. A great paper saver or handy booklet making feature.

MS Office and Internet Explorer Integration:

Quickly convert your MS Office docs to PDF's with the pdfMachine MS Office toolbar. Adds a toolbar to Word, Excel, PowerPoint and Outlook.

Automatically generates PDF bookmarks from Word and Powerpoint documents.

In Word and PowerPoint, all internal bookmarks and hyperlinks are converted to PDF hyperlinks, even if they are on images.

When used from IE, automatically preserves hidden hyperlinks behind text and images in the PDF file. Wow!

Network Installations:

pdfMachine now supports "point and print" installation. pdfMachine can be installed like any other network printer

Bookmark Editing:

pdfMachine supports PDF bookmarks! PDF bookmarks are 'hyperlinks' that appear as a table of contents on the left hand side of your PDF file. When you click on a bookmark you are taken directly to that page in the PDF. It is easy to add and edit bookmarks.

Word Mail Merge:

pdfMachine supports Microsoft Word's mail merge to email form documents as PDF attachments.

Digital Signatures:

pdfMachine is the easy way to digitally sign your PDF files.

Parameter Parsing:

Parameters to control almost any pdfMachine option can be dynamically "parsed" out of a PDF file. e.g. parameters such as "email to" and "email subject" can be dynamically "parsed" out of a PDF file for automatic email sending. This makes it great for integration with legacy applications that operate in "batch" mode.

Scanning Support:

Use the pdfScanMachine utility to scan your documents directly to PDF format. JBIG2 compression is supported, resulting in very small PDF's for Black and White scanned images. WIA, WIA2 and TWAIN scanner drivers are supported. Auto deskewing of pages is supported.

Custom toolbar support:

Add your own buttons to the pdfMachine toolbar to call programs or scripts.

Terminal Server support:

Once pdfMachine has been installed on a Terminal Server then users can remote login and start using pdfMachine.

Set Next Action:

Have control of what happens to the PDF file after it has been generated. Launch another, application or automatically send the PDF as an email + more.

Set Document Properties:

Set PDF properties such as Author, Title and Keywords.

Printing Profiles:

Multiple "print profiles" or multiple pdfMachine printers can be easily setup with different options enabled.

e.g. You may setup one printer to always encrypt a PDF document, and another with "normal" settings.

Windows x64 drivers:

If you are running Windows XP x64, Windows 2003 Server x64, Vista x64, Windows 7 x64 then pdfMachine will work for you. pdfMachine ships with a native 64 bit printer driver.

File Embedding / Attaching:

Its possible to attach or embed files and documents in their native format into a PDF file. This means the PDF format becomes a container for other documents, which is a convenient way to treat related documents for emailing, encrypting and signing.

PDF/A :

PDF/A is an archival PDF file format. PDF/A provides a mechanism for representing electronic

documents in a manner that preserves their visual appearance over time, independent of the tools and systems used for creating, storing or rendering the files. pdfMachine can produce files that conform to PDF/A-1b.

Benefits of the PDF format

Integrity:

PDF documents generated by pdfMachine, when printed or viewed, maintain the integrity of all formatting in the original document. PDF files preserve documents formats independent of software, hardware, or operating system used to generate the original file. They can be opened, read and printed by many free PDF readers available on the web, and viewed on operating systems such as Windows, MacOS, and Unix variants.

Technology:

PDF format is the best document format for long-term digital archival. Often software becomes obsolete, rendering some documents unreadable by current technology. Widely published formats, such as PDF, are more future proof than proprietary formats such as MS Word. In 50 years time, even if PDF's are not used anymore, all you need is the PDF specification and you can have a viewer developed to read your documents.

Searchable:

PDF has the ability to store text in a searchable form.

Browsers:

PDF files can be viewed within Netscape and Internet Explorer. These files can then be saved for off-line use or printed. This makes for easy use within an intranet or website.

Colour and Size:

PDF files enable sharp, color-precise printing on most printers with precise onscreen colour match regardless of monitor brand. Users can magnify documents up to 800% without the loss of clarity in text or graphics. PDF files can be optimized and are often smaller than conventional document formats.

Example PDF usage:

- Invoices and Receipts
- Price Lists
- Brochures
- Product info




- Manuals
- Customer and company newspapers and newsletters
- Offers
- Order confirmations
- Study manuscripts
- Minutes from meetings
- Presentation papers

pdfMachine - Product Comparison

All pdfMachine products contain all the features mentioned below.

pdfMachine monitors what features you are licensed to use, according to your registration details. If you are not licensed for a particular feature, a pdfMachine advertisement is placed at the bottom of each page of the current PDF file.

[pdfMachine Demo](#) is free to use. You can try out all the pdfMachine features and then purchase the particular model you need. A small pdfMachine advertisement is placed at the bottom of each page of the generated PDF.

			
Print to PDF	✓	✓	✓
Email PDF	✓	✓	✓
Multilingual fonts	✓	✓	✓
Small File Sizes	✓	✓	✓
PDF Editing	✓	✓	✓
Sticky Notes / Comments	✓	✓	✓
PDF Stationery	✓	✓	✓
Watermarks	✓	✓	✓
Security Encryption	✓	✓	✓
Active URLs	✓	✓	✓
Hyperlinks	✓	✓	✓
N-Up Printing	✓	✓	✓
Office and Explorer Toolbar	✓	✓	✓
Bookmark Editing	✓	✓	✓
Set Next Action	✓	✓	✓
Set Document Title, Author, Keywords Info	✓	✓	✓
Scanning to PDF	✓	✓	✓
Network Installation	✓	✓	✓

Custom toolbar	✓	✓	✓
Print Profiles	✓	✓	✓
Terminal Server support	✓	✓	✓
PDF/A	✓	✓	✓
Digital Signatures		✓	✓
File Embedding / Attaching		✓	✓
Voice Annotations		✓	✓
Text, shapes, lines and arrow annotations		✓	✓
Image and Text stamps		✓	✓
Word Mail Merge			✓
Parameter Parsing			✓