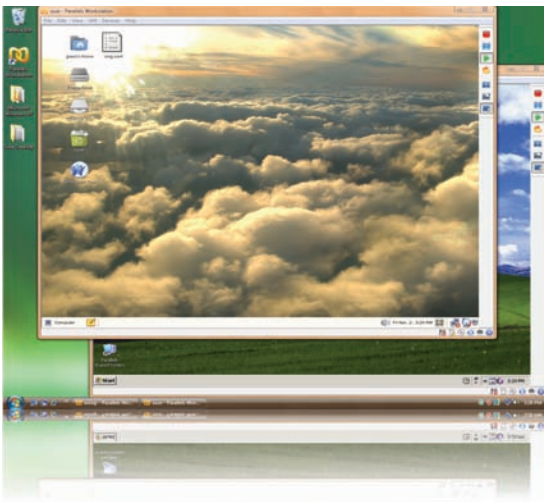


Parallels® Workstation

Run the **newest**, the **oldest** and **everything** in between...side-by-side.

One machine. Unlimited possibilities. Use your favorite PC software, regardless of its operating system.



The world's leading hypervisor-powered desktop virtualization solution, Parallels Workstation lets you run multiple OSes on a single PC.



Why Parallels Workstation?

It's Easy to Use!

- Developed specifically for computer users of any skill level.
- Easy to install, fast to set up and intuitive to use.
- User-friendly management console for multiple virtual machines.
- Includes Parallels Tools, a special toolkit to help you take full advantage of advanced features and functionalities.

It's Fast!

- Lightweight hypervisor gives virtual machines direct access to the host computer's hardware for greater stability and faster performance.
- Fully supports Intel VT-x and AMD Security and Virtual Machine (AMD SVM) for maximum performance and stability.

It's Secure!

- Multiple IP addresses appear as one, making your VM far less vulnerable to hackers.
- Easily create virtual machines just for exploring the Internet and downloading content.

It's Flexible!

- **New!** Parallels Workstation now supports Ubuntu 7.10 and Fedora 8 as primary OS and guest OSes.
- **New!** Support up to 5 network adapters in VM simultaneously.
- Use each independent operating system simultaneously.
- Run "legacy" operating systems alongside newer ones.
- Zip virtual machine profiles in a single file. Load them onto any Workstation-enabled machine.
- Keep the broadest support of x86-based operating systems, including Windows, Linux, FreeBSD and "legacy", at your fingertips.
- Desegregate applications from data to protect critical information.
- Easily create multiple, customized virtual machines for student labs, IT testing and OS configuration.

It's Easy on the Pocket!

- At a fraction of the price of other leading solutions, Parallels Workstation is designed for the home, office or classroom.
- Reduce support costs by testing applications, systems and OS configurations in a secure environment without buying additional computers.
- Give family members their own PC environments without actually buying them their own PC.

Parallels® Workstation

Product Features

- **New!** Now installs on new Linux kernel (2.6.23).
- **New!** **Expanded Network Adaptor Support** – Use up to 5 network adapters in VM simultaneously.
- **New!** **Enhanced OS Support** – Now supports Windows Vista, Xandros, Ubuntu 7.10 and Fedora 8.
- **Enhanced USB 2.0 Support** – Plug and play your favorite USB 2.0 devices.
- **Shared Folders** – Easily share files and folders between operating systems.
- **Synchronization** – Mouse, clipboard and time synchronization for smoother OS integration.
- **Full-featured virtual CD/DVD drive**
- **Dynamic Resolution**
- **Dynamic switching between bridged adapters**
- **Enhanced Sound Support** – Enjoy even more options for emulating sound devices.
- **Unicode Support** – Name files and folders in any language.

Easily create multiple, independent, fully-functional, secure virtual machines on one PC, no matter your level of computer skills.

Whether your'e a home user, an executive or a computer professional, Parallels Workstation helps you just get the job done!



Specifications

Supported Primary Operating Systems

Windows

- Vista Ultimate, Enterprise & Business
- Server 2003 Standard Edition SP0 & SP1
- Server 2003 Enterprise Edition SP0 & SP1
- Server 2003 Web Edition SP0 & SP1
- XP SP2 Professional
- XP SP2 Home
- XP SP1 Professional
- XP SP1 Home
- 2000 Professional Edition SP4
- 2000 Server SP4

Linux

- Fedora Core Linux 4 stock 2.6.11 - 1.1369_FC4
- **New!** Fedora Core Linux 8
- Ubuntu 7.10
- Red Hat Enterprise WS4 stock 2.6.9-5
- Red Hat Enterprise AS4 stock 2.6.9-5
- Red Hat Enterprise ES4 stock 2.6.9-5
- Red Hat 9 stock 2.4.20-8
- Debian 3.0 stock 2.6.8-2-386
- SUSE 10.0 stock 2.6.13-15
- SUSE 9.3 2.6.11.4-20a
- SUSE 9.2 stock 2.6.8-24-11
- SUSE 9.1 stock 2.6.4-52
- SUSE 9.0 stock 2.4.21-69
- Mandriva 10 stock 2.6.3-7
- Xandros 4.0 Business

Hardware Requirements

Processor

700 MHz or faster, which supports the Pentium III instruction set. 1.5 GHz or faster is recommended.

Disk Space

Software Installation - 25 MB of available hard drive space for the Parallels Workstation installation. (Does not include hard drive space for guest virtual machine.)

Virtual Machine Installation - Hard drive space allocation for virtual machine is dependent upon the guest OS.

Memory

Memory to run primary OS, plus memory required for each guest OS and its applications.

Networking

To access the Internet from your virtual machine, the host computer and primary OS must have an Ethernet adapter. Serial or parallels port (optional).

Display

Any SVGA video card with an 8-bit display adaptor supported by the primary OS. 16-bit color depth or higher is recommended.

Drives

CD/DVD-ROM drive for installation (if applicable).
3.5" floppy drive (optional).

Supported Guest Operating Systems

Windows

- Vista Ultimate, Enterprise & Business
- Server 2003 Standard Edition SP0 & SP1
- Server 2003 Enterprise Edition SP0 & SP1
- Server 2003 Web Edition SP0 & SP1
- XP SP 2 Professional
- XP SP 2 Home
- XP SP 1 Professional
- XP SP 1 Home
- 2000 Professional Edition SP4
- 2000 Server SP4
- 2000 Advanced Server SP4
- NT Workstation 4.0 SP6
- NT Server 4.0 SP6
- Windows ME
- Windows 98
- Windows 95
- Windows 3.11
- Windows 3.1

Linux

- Red Hat Enterprise WS3 & WS4
- Red Hat Enterprise AS4
- Red Hat Enterprise ES3 & ES4
- Red Hat 9
- Red Hat 7.3
- Debian 3.1
- **Expanded!** Fedora Core 3, 4, 5 & 8
- SUSE 9.0, 9.1, 9.2, 9.3 & 10
- Mandriva 9.2, 10 & 10.1
- **Expanded!** Ubuntu 5.0.4 & 7.10
- Xandros 4.0

Other

- Sun Solaris 9 & 10
- MS-DOS 6.2
- FreeBSD 4.1, 4.5, 5.3 & 5.4
- OS/2 Warp 3, 4 & 4.5
- eComStation 1.1 & 1.2