

# O&O PartitionManager 3

Server Edition



## More security through disk partitioning

Clear and structured Server systems lower the IT costs of your company, and are indispensable when running data rescue operations or repairing systems. The O&O PartitionManager core functions enable you to split your hard disks into partitions and to change their size. The integrated technologies, O&O SafeErase and O&O Defrag, increase overall security and maximize your Server performance.

### Supports all disk types

O&O PartitionManager places comprehensive disk support as a foundation for professional-level disk management. The program recognizes and supports basic disks, dynamic disks, as well as removable drives, USB sticks and memory cards. This enables you to create various disk types and convert them from one form to another. You can, for instance, convert a basic disk into a dynamic volume, and change from one layout to another (MBR and GPT).

### Clear user interface

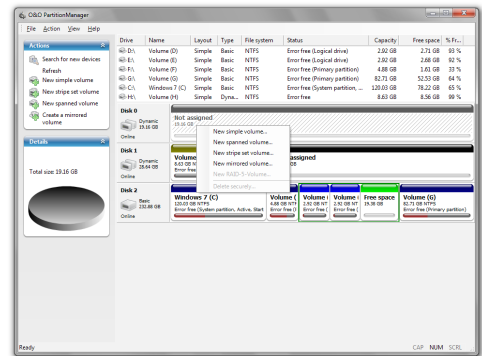
The various options available by right-clicking, as well as the clear structure of the program functions make hard disk management easy and quick. You can, for example, open partitions/volumes directly by right-clicking on them, as well as convert between logical drives and primary partitions. In properties, you can see all disk details, such as S.M.A.R.T. data and information on surface errors.

### Boot directly from CD

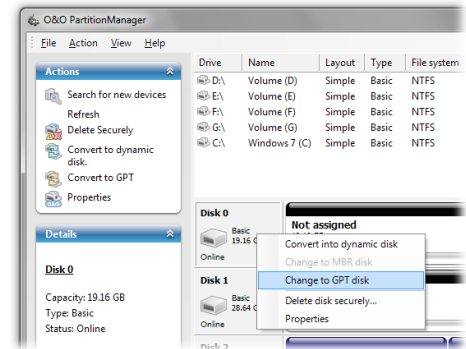
The operating system on the unique Start CD is based on Windows. No previous installation is needed when booting O&O PartitionManager from the CD. You can choose from various Windows drivers to suit your needs and ensure a high compatibility with your system. If, however, you should still be in need of additional drivers, you will be able to download them before starting the program. Accessing hard disks using the newest technologies will not be a problem.

### Modifying the system partition with the help of the Start CD

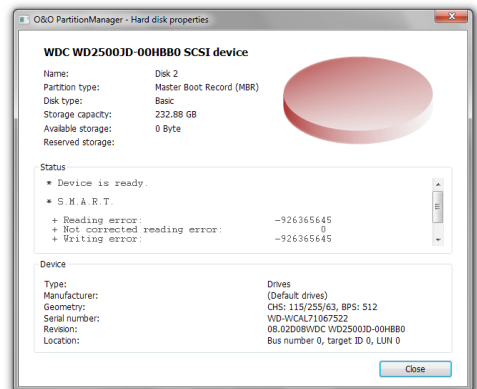
Normal disk management programs only offer limited possibilities to change system partitions. Many require you to restart your computer and work in the Native Mode, since processes usually work without user interactions. The Start CD allows the O&O PartitionManager to be booted from Windows. This enables you to comfortably extend, shrink or move system partitions regardless of their data volume and file system quickly and simply.



Start Page under Windows



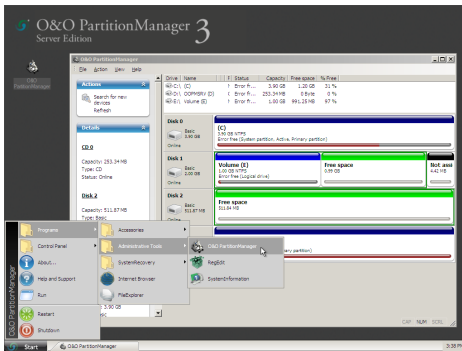
Change to GPT disk



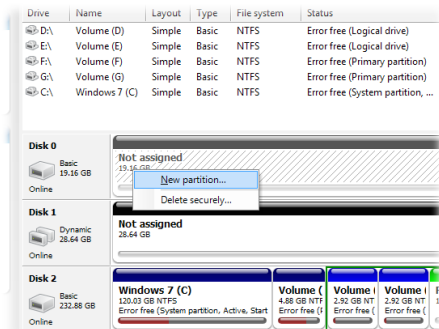
Hard disk properties

# O&O PartitionManager 3

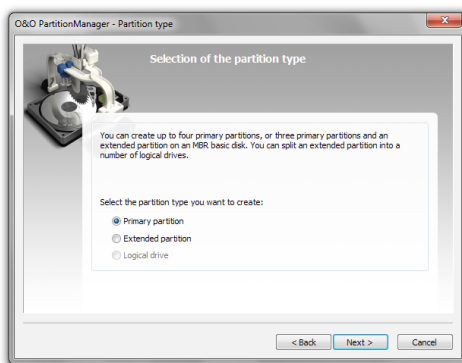
## Server Edition



Starting O&O PartitionManager without an operating system



New partition



Selection of the partition type

### Shrink partition to minimal size

To effectively shrink a partition, run an optimization before continuing with the modification. Files will be moved physically to the "front" of the volume, which increases the distance of the last file to the end of the volume. This results in the maximum shrinking level. Optimization is based on the technology of our multiple award-winning defragmentation program O&O Defrag.

### Delete data securely

Whenever you delete data, they become "invisible" to your system. However, your data still exist on your hard disk. You should be especially cautious, if you want to give away or sell your computer. If you really want to make sure that your data is irrevocably deleted, use O&O Safe-Erase, the integrated deletion application. Data deleted with the help of this tool cannot be restored, even with special data rescue software.

### O&O PartitionManager with O&O DiskImage

The O&O PartitionManager offers comprehensive partition and data security management in combination with O&O DiskImage. First, create separate partitions for the Server operating system and for your personal or business data. After that, you will be able to create images of your data partitions at regular intervals with the help of O&O DiskImage. Rest assured that your entire dataset and any modifications to it will be captured. In addition, you can create an image of your system partition separately, before installing additional programs or download new drivers. This level of protection will allow you to change Server configurations, create new profiles or try out software with total peace of mind.

### Advantages of stripe sets, mirror volumes and RAID 5 volumes

A stripe set (RAID 0) stores data alternating on stripes on the selected disk. Since the load is distributed, data is written and read faster on a stripe set than on a basic e or a spanned volume. The mirror volume (RAID 1), on the other hand writes identical data on indicated disks. The data is "mirrored" from one disk, e.g. hard disk to another. This procedure produces a "security copy", which comes in handy in the event of a disk malfunction. A RAID 5 volume is a mixture of RAID 0 and RAID 1. It increases the speed of processing and provides a backup copy of written data. As a result, RAID 5 is not only able to perform better, but is very fail-safe as well. To have a RAID 5 volume, you'll need at least three disks.



## Made in Germany. Made in Berlin.

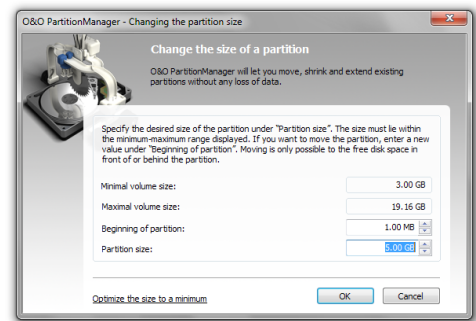
All O&O products are developed and perfected in Berlin, Germany. We listen to the concerns of our customers, because we know how important their data is for them. And we've been doing that now for over ten years!

## Product Features:

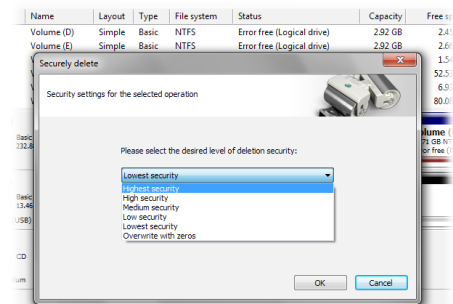
- Create, delete, extend, and shrink partitions
- Supports all disks types, also MBR, dynamic, and GPT disks
- NEW: Processing stripe sets, mirrored volumes and RAID 5 Volumes
- NEW: Convert logical and primary partitions
- Includes leading technologies from O&O Defrag and O&O SafeErase
- Enhanced: usability
- Start CD based on Windows, including system rescue tools
- NEW: detailed display of disk and volume properties
- NEW: Display of S.M.A.R.T. data of disks with information on surface errors
- Supports Windows file systems FAT, FAT32 and NTFS

## System Requirements:

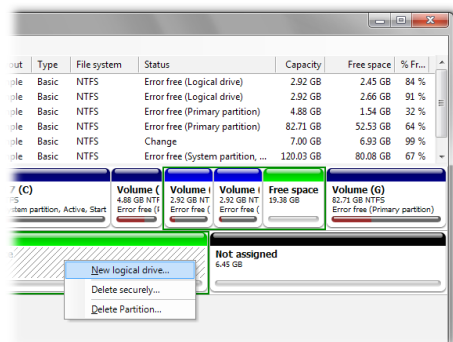
- Minimum requirements of the respective operating system
- 1 GB RAM recommended (for Start CD)
- 20 MB free hard disk space
- 32 Bit/64 Bit support
- Windows® 7, Vista®, XP and 2000 Pro (all Editions)



Change the size of a partition



Securely settings



New logical drive