



An early-warning system for hard disk crashes

A server failure is now equivalent to a power failure in your company. Nothing works anymore. Work and data loss can have costly consequences. With O&O DriveLED 3, however, you now have the ability to recognize a potential malfunction before it happens, since it monitors your hard disk from the background. You'll have time, to image your data and thus prevent the loss of data by exchanging the malfunctioning hard disk – time a sudden crash will otherwise never give you.

Manage O&O DriveLED in the network

Hard drives are among the most stressed components of your computer. This high use can lead to a failure during operation, which often occurs without warning. O & O DriveLED permanently monitors the status of your hard disks in the background and warns you of impending problems. In conjunction with the O&O Enterprise Management Console, O&O DriveLED will warn you early-on if or when a network computer is about to crash. Whenever O&O DriveLED identifies problems on a computer, it will be highlighted in the report of the O&O Enterprise Management Console. You will see at a glance which computer is affected. In addition, you will receive regular reports on the status of all hard disks.

S.M.A.R.T. hardware monitoring

O&O DriveLED uses the S.M.A.R.T. (Self-Monitoring, Analysis and Reporting Technology) integrated in hard disks to permanently monitor the status of drives. This allows the program to readout the values for essential properties that are detected by the hard disk during a self-diagnosis. Some of these values might be the total number of hours in operation or the read error rate. Over the course of time, the values will deteriorate and are an indication that the hard disk is wearing out. A detailed readout keeps you informed about the most important data on your hard disk: everything from the number of previous system starts up to the current temperature. In this way, O&O DriveLED warns you about impending problems.

Interpreting the status of your drives

On the user interface of O&O DriveLED, each drive is symbolized by a colored lamp. Each of these LEDs will show you the latest status of any particular drive. Depending on the status, the LEDs will display a different color:

- Blue - no activity to report
- Green - reading access on the partition
- Red - data is being written on the partition
- Yellow - data is being simultaneously written and read

Differences between Editions

Starting with version 4, O&O DriveLED is available in three different Editions. The Professional Edition can monitor the drives on a desktop computer. It cannot be used on server operating systems and contains no interfaces for network management. The Workstation and Server



1. Symbol for a hard disk
2. Symbol for a drive/partition
3. Storage capacity of the drive
4. Temperature of the respective hard disk
5. USB hard disk

O&O DriveLED 4

ID: SCSI-2 TYPE: SCSI

SERIAL NUMBER: WD-WCAL71067522

USED SPACE: 74GB TEMPERATURE: 35°C

SIZE: 233GB WORK TIME: 37,614H

MODEL: WDC WD25 00J0-00H8B0 SCSI DISK DEVICE

FIRMWARE: 08.0 STATUS: OK

VOLUME	FILESYSTEM	USED SPACE
C:	NTFS	39GB of 120GB
D:	NTFS	447MB of 3GB
E:	NTFS	341MB of 3GB
F:	NTFS	3GB of 5GB
G:	NTFS	30GB of 83GB

Hard disk properties

O&O DriveLED 4 S.M.A.R.T. VALUES

ID	NAME	VALUE	HORST
1	FREQUENCY OF ERRORS WHILE READING ...	200	139
3	NEEDED TO SPIN UP	126	124
4	NUMBER OF SPINDLE START/STOP CYCL...	100	100
5	QUANTITY OF REMAPPED SECTORS	199	199
7	FREQUENCY OF ERRORS WHILE POSITIO...	200	200
9	NUMBER OF HOURS ELAPSED IN THE POW...	49	49
10	NUMBER OF RETRY ATTEMPTS TO SPIN U...	100	100
11	NUMBER OF ATTEMPTS TO CALIBRATE T...	100	100

DESCRIPTION: Needed to spin up: Time needed by spindle to spin-up to full RPM

S.M.A.R.T. information about hard disk



Drive activity



O&O DriveLED 4

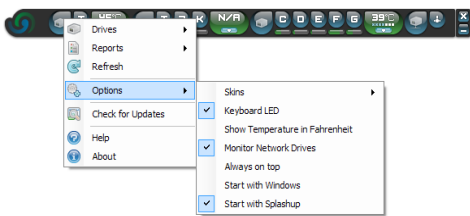
Server Edition



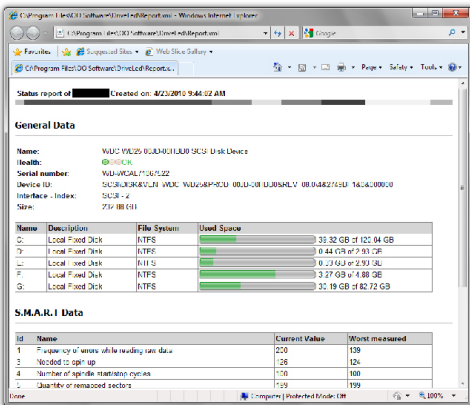
Critical temperature



S.M.A.R.T.-Error (red LED), temperature is in order



Right-click menu – settings



Status report

Editions have interfaces for controlling O&O DriveLED across a network. Together with O&O Enterprise Management Console, it's possible to identify impending crashes on network computers. The Workstation Edition can only be used on desktop computers, the Server Edition on both desktop and server systems.

About O&O Enterprise Management Console

The O&O Enterprise Management Console minimizes the workload for managing the IT infrastructure in your company, so you can concentrate fully on your core business. You can now manage your network from your workstation. The Console not only allows you to regularly execute Jobs on individual computers and sites, but also lets you remotely install O&O products. A manual installation on site is no longer necessary. All events are recorded in detailed reports and stored in a database, so that you may access information on the status of Job execution at all times.

Made in Germany. Made in Berlin.

All O&O products are developed and continually perfected in Berlin, Germany. We listen to the concerns of our customers, because we know just how important their data is for them. And we've been doing this now for over ten years!

Features at a glance

- NEW: Redesigned user interface
- NEW: Also available in Workstation and Server Editions
- NEW: Status reports
- NEW: Connects to O&O Enterprise Management Console
- Displays read/write access for logical volumes
- Displays storage capacity for every drive
- Automatic monitoring of all S.M.A.R.T. properties
- Displays current temperatures on all hard disk drives (when supported by manufacturer)
- Warning of possible operational errors on all hard disk drives
- Supports all Windows-compatible disks
- Support of SCSI-disk drives
- Monitors network drives

System requirements

- Minimum requirements of the respective operating system
- 32/64-bit support
- 15 MB free hard disk space
- Windows® XP till Windows® Server 2008 R2 (all Editions)