



Fragmented hard disks put the brakes on your productivity

Fragmented hard disks put the brakes on the servers in a company and as a result, have a bad affect on productivity. The level of fragmentation proportionally increases the time needed for accessing a hard disk– and thereby increases the amount of valuable time lost as well. The new O&O Defrag 14 Server Edition for Windows servers optimizes your hard disk and packs file fragments securely back together again.

New features in version 14

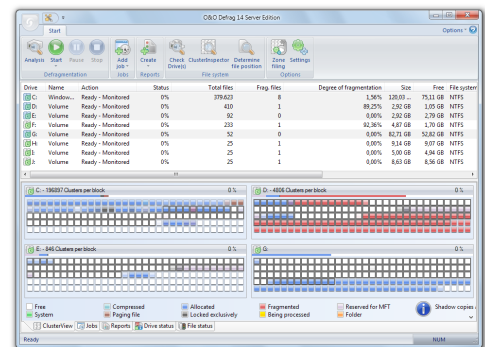
Among its many innovations, O&O Defrag 14 is now able to optimize any make of Solid State Drives (SSD). After optimization, SSDs are able to access data faster and minimize the wear on flash chips. The navigation in O&O Defrag 14 was designed to coincide with most user scenarios, so almost all important jobs can be performed intuitively. O&O Defrag's new Quick configuration allows you to defragment your server right after installation, or, with just a few mouse clicks, schedule to have it done automatically later on. Once setup, you'll never have to do anything else about optimizing your server's hard disks.

Data sorted into zones

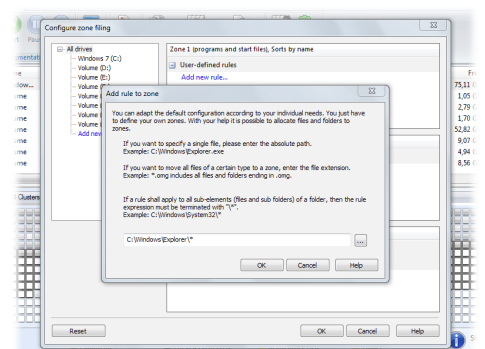
Sorting drives into zones results in a logical separation of the database into performance- critical and non-critical files. Files are divided and moved into zones according to their designated use and access frequency. The hard disk can also be sorted into zones that meet your own requirements. As a result of separating files based on how often they need to be written, it's possible to intelligently prevent fragmentation from occurring. Thanks to this logical organization of files, you'll need much less time for accessing files or starting your system and programs. Successive defragmentation will also take much less time, and all the classical server jobs can be accomplished more quickly.

Automatic optimization

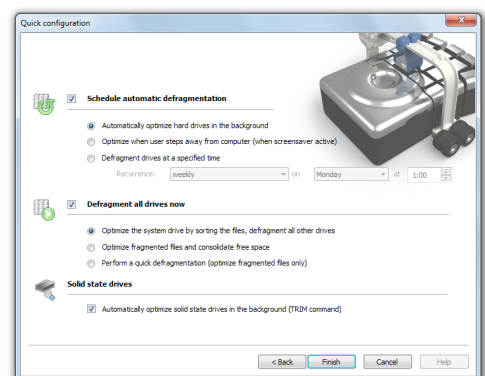
The Server Edition of O&O Defrag 14 gives you the option of choosing between the new automatic optimization and an all-inclusive, individual configuration. After installation, automatic optimization is the default setting and it guarantees you improved performance without the need for any time-consuming configuration. Your disks will be optimized behind the scenes without limiting your server's performance in any way. Individual configuration allows you, among other things, to setup O&O Defrag for defragmenting as soon as a certain level of fragmentation is reached on a hard disk or partition. Defragmentation can also be scheduled for a particular day of the week, or whenever a screensaver is being used. You can pause and resume defragmentation whenever you want because O&O Defrag automatically recognizes where defragmentation was interrupted.



O&O Defrag mainview



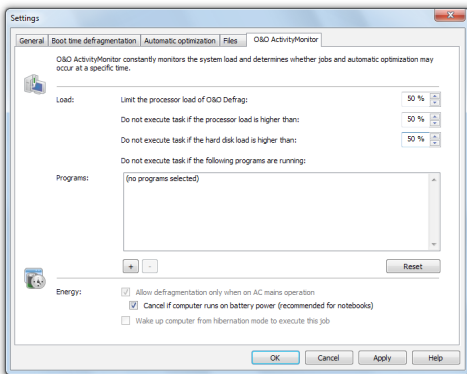
New rule for zoning



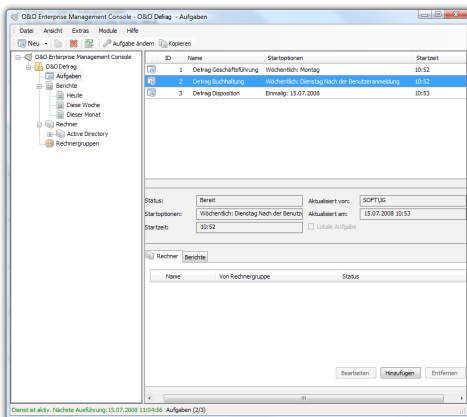
Quick configuration

O&O Defrag 14

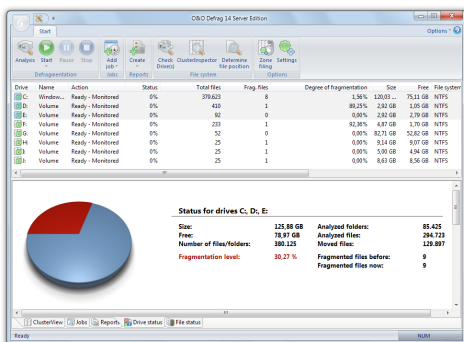
Server Edition



O&O ActivityMonitor



O&O Defrag with O&O Enterprise Management Console



Drive status

Optimizing Solid State Drives (SSDs)

Through the use of periodic ATA TRIM commands, your Solid State Drives will be kept informed of those disk areas that are not being used. The drive will then be able to use these free areas for a drive-internal optimization of data management, instead of as a storage location for the contents of data that is no longer needed. After optimization, SSDs will be able to access data faster and minimize the wear on flash chips.

Manage O&O Defrag across a network

When used together with O&O Enterprise Management Console, O&O Defrag can be managed from a central location across an entire network. The Console will let you run defragmentation jobs on individual workstations and servers as well as across sites. You'll also be able to perform automatic remote installation and update to new versions of O&O Defrag. All events are logged in detailed reports and saved in the database so that you can be kept informed about the success of any job you run.

Customize the O&O ActivityMonitor

In the O&O ActivityMonitor, you can define the level of system load at which an automatic optimization should start and the maximum percentage of system performance O&O Defrag is permitted to use. The O&O ActivityMonitor periodically measures the server's level of capacity. It controls the amount of power O&O Defrag can use and adjusts it to the current status of the system. This allows users to continue working on a server while a defragmentation is running in the background.

Boot-time defragmentation

O&O Defrag can run defragmentation while Windows is being started. Optimization is normally done in the background while the server is being used. This allows you to continue working undisturbed. There are, however, some system files that the operating system purposely blocks during operation. These files can only be defragmented when they're no longer being blocked by the operating system. This is possible before a Windows login, during the so-called Windows startup process. As there are no operating system processes running at this time and the user is unable to start any programs, this period is referred to as boot-time defragmentation.



Automatic job execution

A periodic defragmentation is the key for maintaining a maximum performance level. There's no longer any need for running a manual defragmentation every time; O&O Defrag offers a clever scheduling feature which does the job for you. Using defragmentation jobs, you can define the starting point, the action, and other parameters for any defragmentation. You'll be able to create jobs, change them, or delete them. If a job isn't needed at the moment, but you don't want to delete it, it can be disabled. The job will not be run until you enable it again.

Status reports

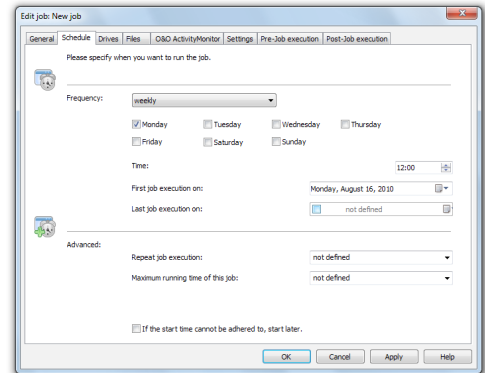
Status reports keep you informed about the level of performance of your computer's drives. O&O Defrag provides you with status reports containing general information about a drive, the file system, any defragmentation job that was run, and the results. Also included are detailed lists about files whose size or level of fragmentation might have a negative impact on the system's performance.

Using the command line version

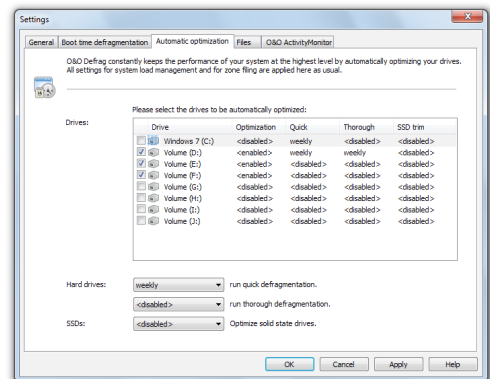
You can also control defragmentation by using the command line version of O&O Defrag. This allows you to run O&O Defrag via scripts that can be used, for example, to startup a system or when users login.

About O&O Enterprise Management Console

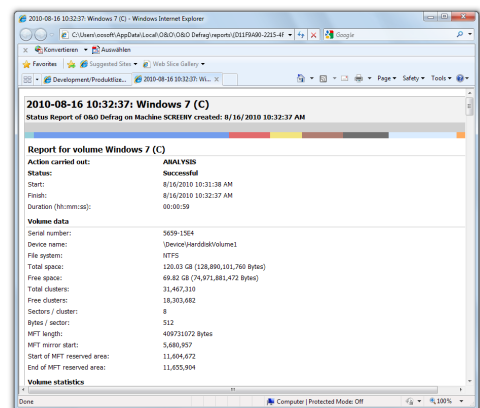
The O&O Enterprise Management Console is the central management tool for your O&O programs across a network, and was specifically designed to suit the needs of administrators. It takes just a few steps to install O&O Defrag across a network and experience a way of new way of working. The O&O Enterprise Management Console is delivered as a separate installation and is included in your software delivery if you've purchased licenses under our O&O EasyLicensing volume license program. Please get in touch with us, and we'll be happy to show you just how easy it is to make O&O Enterprise Management Console 3 part of your company!



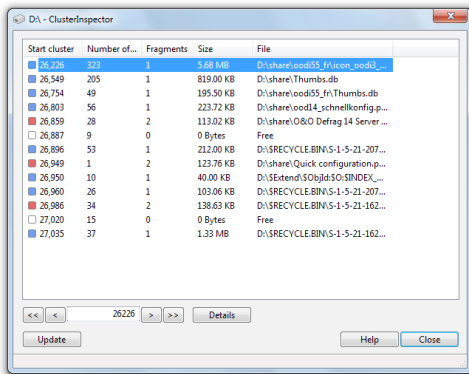
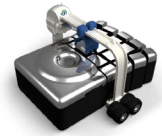
Edit job: Schedule



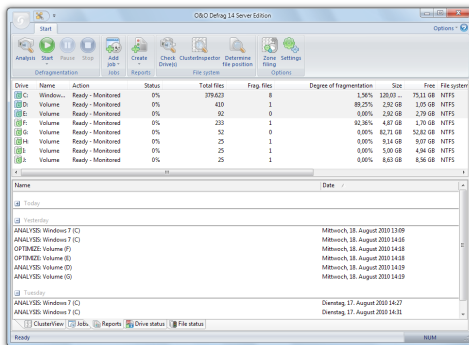
Automatic optimization



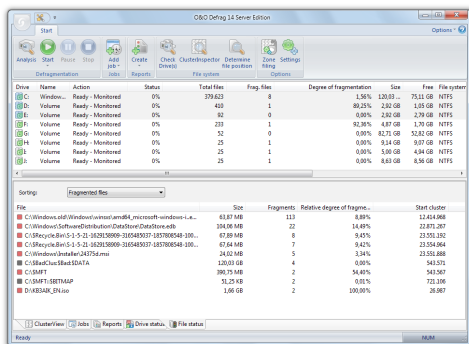
Report



ClusterInspector



Report view



File status

Made in Germany. Made in Berlin.

All O&O products are developed and serviced in Berlin. We take the concerns of our customers very seriously because we know just how important their data is for them. What's more, we've been doing so for over ten years!

Important Features at a Glance

- NEW: Optimizes any make of Solid State Drives (SSDs)
- NEW: Quick configuration for getting started easily
- NEW: Optimized control of zoning
- NEW: O&O ActivityMonitor for managing resources
- NEW: Improved automatic optimization in the background
- NEW: Advanced management of reports
- Zone filing for optimal organization of files
- Eight (8) defragmentation methods
- Even better at eliminating high levels of fragmentation
- Optimized for Windows Server operating systems
- Job Assistant for scheduling defragmentation
- Displays status of files and drives
- Network capability with O&O Enterprise Management Console

System requirements

- Minimum requirements of the respective operating system
- 512 MB RAM (1 GB RAM recommended)
- 50 MB free hard disk space
- Windows Server 2003 and R2, XP, Vista®, Server 2008 and R2, Windows 7, Small Business Server