



Optimizes your file cache management under Windows

O&O CleverCache resolves file cache problems under Windows. It does so by taking control of the storage resource management. As a result, it is possible to accelerate the answering times of applications. This is the only way to prevent straining the system to its maximum. Efficiency is increased and there's an improvement in the way existing hardware resources are used.

Simple installation, no restart

O&O CleverCache is a Windows service that is started and configured automatically. There is usually no need for additional manual modifications. This service is initialized at each system start. You can check if O&O CleverCache started correctly by looking for the Tray Icon on the Taskbar.

What O&O Clever Cache does

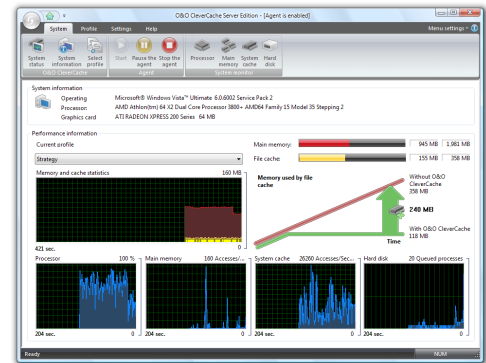
If a computer is used without interruption for longer periods, slower answering times of applications will occur. By restarting the computer, you will find out that the system runs with significantly higher performance. The reason for this is the empty file cache resulting from the reboot of the system. O&O CleverCache achieves the same result without any reboot, ensuring that maximum performance while the system is online.

Enhanced Profile Management

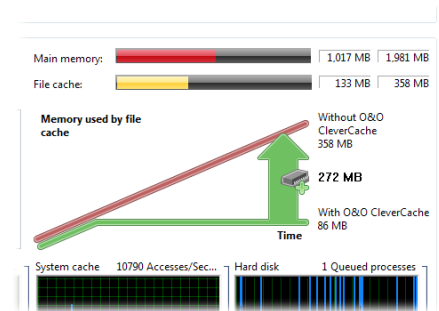
Enhanced profile management provides O&O CleverCache with predefined profiles, which make it easier to work with the program. Your system will be analyzed at each start whenever an O&O AutoSense profile is selected. If changes in the main memory are detected, O&O CleverCache automatically updates the configuration settings, so that the new hardware is optimally used. You can also set your own settings in the user profile. This will allow you to load your cache settings for, let's say, video editing or games at just the right moment. Even if you reinstall Windows, your user profiles will not be lost, since O&O CleverCache is able to export and import these profiles as files.

O&O Mem-O-Safe

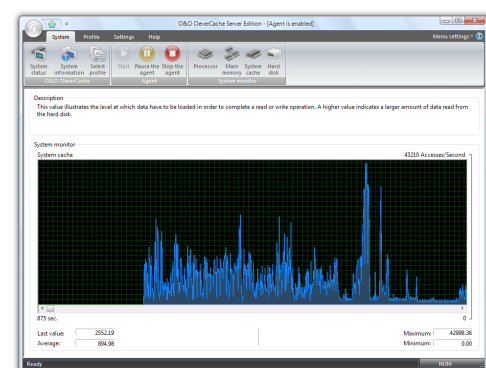
O&O Clever Cache now also includes "Mem-O-Safe" along with its other features. It allows you to control the update interval of the file cache. In order to improve system performance, data isn't immediately written to the secondary medium (e.g. hard disk), but buffered in the internal file cache to wait for additional data that might also need to be written. Just how long this waiting period lasts is not usually something you can control: not until O&O Clever Cache enters the picture. O&O CleverCache 7 lets you control this update interval, enabling you to make sure that the least amount of data is lost in the event of a system crash or something similar.



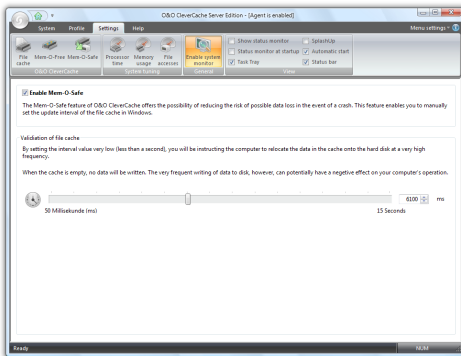
Startpage



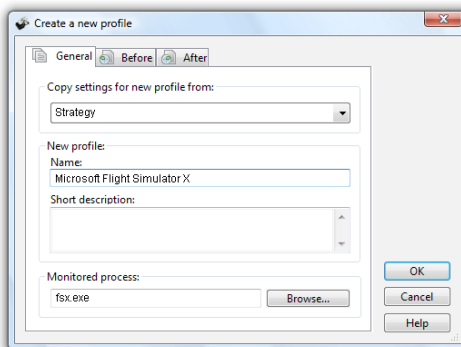
Memory used by file cache



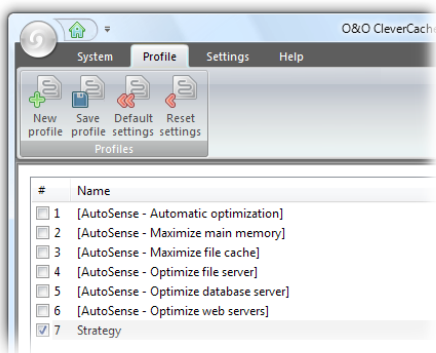
System monitor



Mem-O-Safe



Create a new profile



Profiles

System Tuning

The System Tuning feature in O&O CleverCache includes a number of functions that can optimize or accelerate the performance of your operating system. These functions also give you access to system parameters not granted by the standard tools offered in Windows.

System Monitor

The System Monitor enables you to monitor the condition and performance of the most important components of your PC System. With this feature you can receive realtime status reports on, amongst others, your processor, main memory, system cache, and the hard disk.

Made in Germany. Made in Berlin.

All O&O products are developed and perfected in Berlin, Germany. We listen to the concerns of our customers, because we know how important their data is for them. And we've been doing that now for over ten years!

Product Features:

- NEW: Revised user interface with clear Toolbar
- NEW: Statistical evaluation of the storage usage
- NEW: Enhanced profile management
- NEW: Supports Windows® 7 and Windows® Server 2008 R2
- Predefined profiles (AutoSense)
- Create, export and import individual profiles
- Detailed memory use and cache statistics
- System Tuning and System Monitor
- Mem-O-Free for more available main memory
- Mem-O-Safe for increased security in the event of a crash

System Requirements:

- Minimum requirements of the respective operating system
- 100 MB free disk space
- 32-bit/64-bit support
- From Windows® XP to Windows® Server 2008 (all Editions)