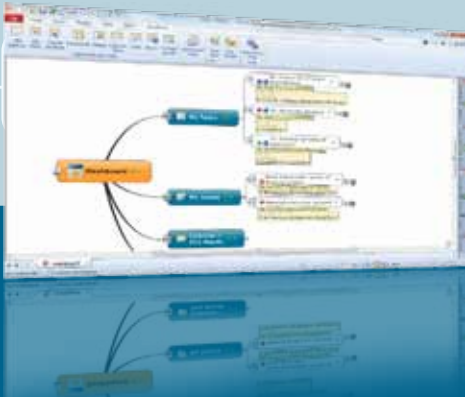


The Mindjet logo consists of the word "Mindjet" in a white, sans-serif font, enclosed within a red rectangular border with rounded corners.

MindManager®

Explorer for SharePoint®



MindManager® Explorer for SharePoint® puts the power of SharePoint within your control. MindManager's easy-to-use dynamic views improve access to organizational assets to accelerate projects and collaborative processes.

How it works:

MindManager Explorer for SharePoint displays SharePoint content in MindManager's easy-to-use interactive views. By mapping out SharePoint sites, you and your team will gain new perspective, increase the quality of your planning and improve your execution on projects and work processes.

Increase Your SharePoint Productivity

- Consolidate tasks and resources across all of your SharePoint sites and lists for easy follow-up and review.
- Access, review and update information with fewer clicks in a single dynamic view.
- Search across multiple SharePoint sites and lists.

Accelerate Projects and Collaborative Processes

- Managers and teams use their personalized SharePoint views in MindManager to track and act upon all of their assigned tasks, issues and documents.
- Understand project timelines by viewing SharePoint tasks with MindManager's synchronized Gantt view.

TOP FEATURES

SharePoint List Visualizations

Get the big picture with consolidated views of SharePoint list data from one or more SharePoint sites. Aggregate and display content from the following lists: tasks, documents, issues, calendar items, images, announcements, links and custom lists.

List Wizards

Take advantage of easy-to-use wizards to setup consolidated views for tasks, documents, issues, calendar items, images and custom lists.



THINK IT. SEE IT. SHARE IT.



TOP FEATURES (CONTINUED)

Site Explorer

Save time accessing SharePoint data with customizable site maps for one or more of your SharePoint sites.

Bi-directional SharePoint Integration

Each SharePoint topic in MindManager can be opened and edited within MindManager. When MindManager topics linked from SharePoint contain "% Complete & Priority", the values can also be edited directly within the topic.

Content Search

Find what you need fast by searching for content across one or more SharePoint sites. Results are displayed in context, directly in your MindManager map.

SharePoint Content Filters

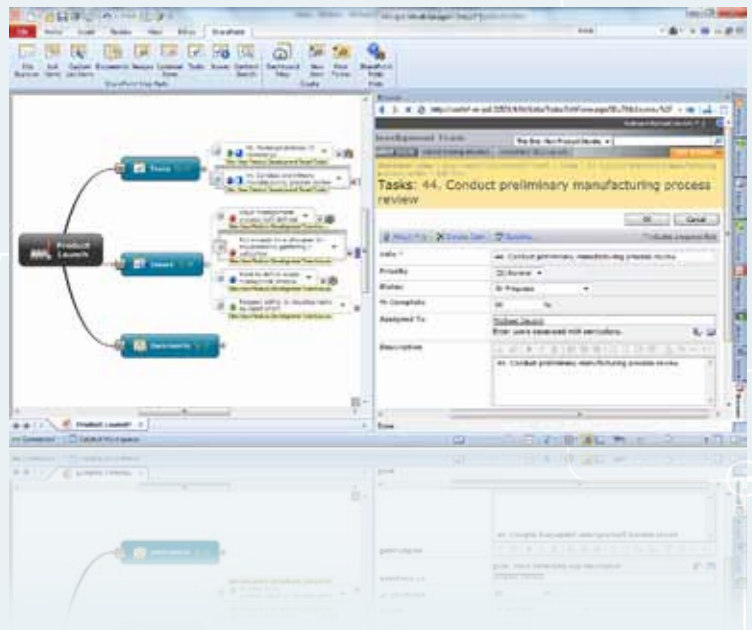
Apply powerful filters to the information that is visualized inside of MindManager to create customized views that drive your projects and processes forward.

Map Refresh

Always have the latest information at your fingertips with automatic updates in your map when it is opened and periodically refresh SharePoint content within your opened map based on your customized settings.

Create New SharePoint Items and Folders

Quickly create new SharePoint list items and folders from within MindManager.



SYSTEM REQUIREMENTS

MindManager Requirements:

- MindManager® Version 9 for Windows®

SharePoint Requirements:

- Microsoft® SharePoint® Server 2010
- Microsoft® SharePoint® Foundation 2010
- Microsoft® Windows® SharePoint® Services 3.0
- Microsoft® Office® SharePoint® Server 2007 Standard
- Microsoft® Office® SharePoint® Server 2007 Enterprise

Mindjet GmbH

European Headquarters
Siemensstrasse 30

63755 Alzenau, Germany
www.mindjet.com

Mindjet (UK) Ltd.

Profile West
950 Great West Road, Brentford

TW8 9ES, United Kingdom
www.mindjet.co.uk

© 2010 Mindjet