



Safely access and share information at home, at work and on the road!

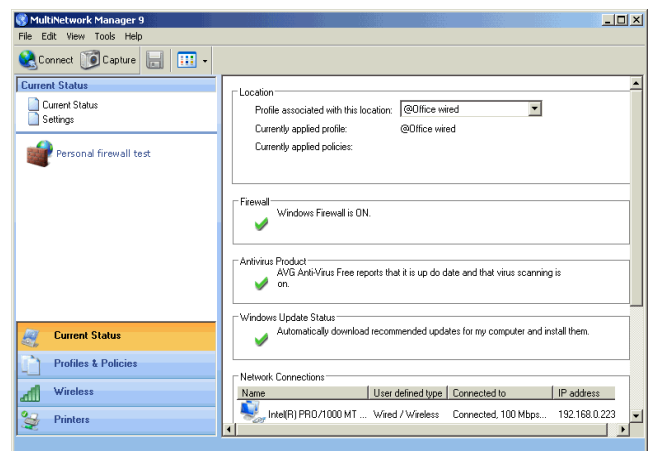
The need to connect a computer to different networks is growing. We expect to be able to connect and work from wherever we are. The benefits are obvious, but the technical complexity for the end-user is increasing. We need more than just a movable laptop. We need our laptop to connect to the Internet, corporate LANs and home networks. And to do this securely we need to deal not only with the connectivity barriers but also with enabling, disabling and configuring VPNs, personal fire-walls, proxies, e-mail clients etc.

MultiNetwork Manager is software that facilitates secure access and share of information for mobile computer users. It has an easy to use interface with guides that will make your connection quick, easy and secure no matter which access method you use (WLAN, LAN ISDN, DSL, GPRS etc.).

- 1 Get connected, access and share**
Often on the move and would like to connect from wherever you are? One of the main features of MultiNetwork Manager is to provide a laptop user with instant Internet connection and access to information independent of location.

You can make instant:

- *Wireless connections/Wired connections*
- *Dial-up connections (ISDN, GPRS, UMTS/3G)*
- *Connection to other networks*



- 2 Wireless access points in range**
Need to connect wireless quickly? MultiNetwork Manager is also a complete WLAN client supporting all brands of WLAN adapters. It will display all wireless access points in range, e.g. different Internet service providers, company or home WLANs. You can easily access and switch between them by clicking in a list. Export and import features make it easy to share access settings with colleagues and friends.
- 3 Quickly switch between networks using location profiles**
You may have been at a customer site or for any other reason had your computer reconfigured with the assistance of an IT administrator. When returning to your ordinary work place or situation, the configuration changes made to your computer can cause you to be unable to connect to the network or reach your resources. With MultiNetwork Manager you may store your configurations into profiles for re-use. MultiNetwork Manager will automatically suggest the appropriate profile to be applied, **location sensing**, but you may of course always choose the appropriate location profile. Using profile switching also many annoying mistakes are avoided, e.g. printing on the wrong printer due to incorrect default printer setting.
- 4 Always stay secure**
MultiNetwork Manager will warn you if your firewall is not enabled or if your anti-virus program is not up to date when connecting to a new location. A specific screen will show you the current security status of your computer. By defining policies you can ensure that a firewall is enabled or that file sharing is blocked when you connect to an unknown network. You can also design scripts to be run whenever you connect to an unknown network, scripts that ensure that security measures are not forgotten.

MultiNetwork Manager 9

MultiNetwork Manager 9 is targeted for individuals, home and business users, who want to explore the benefits of easily connect at new sites, store profiles to switch between location settings for network access and resource allocation. MultiNetwork Manager 9 is also the perfect tool for IT administrators and professionals who need to administrate network access, security and resource allocation for company users.

The new MultiNetwork Manager 9 is fully Vista compatible. The functionality and user interface of MultiNetwork Manager 9 has been greatly enhanced to provide ease of use and powerful features for both less experienced and expert users. MultiNetwork Manager 9 is GlobeSoft's comprehensive high-end offering, making it even more cost effective and safer to roll out MultiNetwork Manager to a large population of users. It offers more functionalities and configuration possibilities compared to previous versions of MultiNetwork Manager.

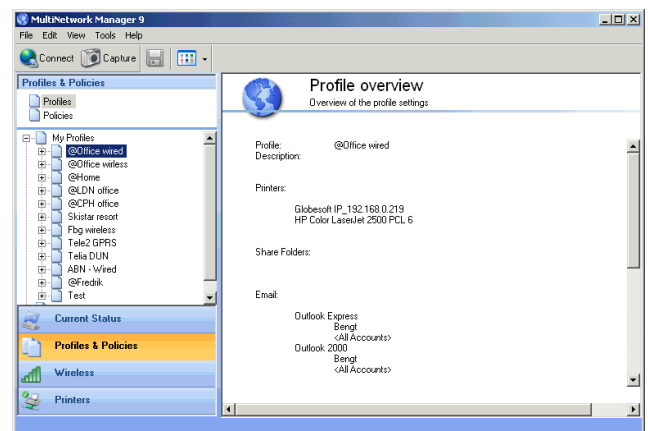
Examples - Features:

Access:

- Single click instant secure network connection
- Join your computer to multiple domain and workgroup accounts.
- Easily share wireless security settings with other people
- Find and set default printer, never print on the wrong printer again
- Save successful configurations into profiles allowing you to reconnect at e.g. a client site

Administrative benefits:

- Create and update profiles centrally and push them out to remote users.
- Manage all WLAN adapters with one common client
- Makes it easy for your users to use VPN by creating a VPN-profile that can be enabled/disabled automatically or in one click.
- Ensure security policies by distributing security settings at installation, as pushed-out profiles, as policies or added components.



MNM 9 Key Components that can be controlled in a profile

- TCP/IP
- DUN (Dial-Up)
- Proxy
- Domain/Workgroup
- Map Network Drives
- Printers
- Run scripts
- Environment
- Registry
- WLAN (WEP/WPA/WPA2*/WPA-PSK etc.)
- E-mail client
- Firewall Control
- AntiVirus Control
- Profile management
- Internet options

System requirements

- Microsoft Windows 2000/XP/XP-Tablet/VISTA
- Pentium class computer
- 128 MB RAM
- 10 MB of free space on hard drive
- 10/100/1000 Ethernet NIC
- For wireless support, XP-compatible WLAN adapter is required (NDIS5.1)

**Considering a deployment in your company?
Please contact GlobeSoft for evaluation
licenses. We are happy to assist you during
your evaluation process.**

E-mail: sales@globesoft.com