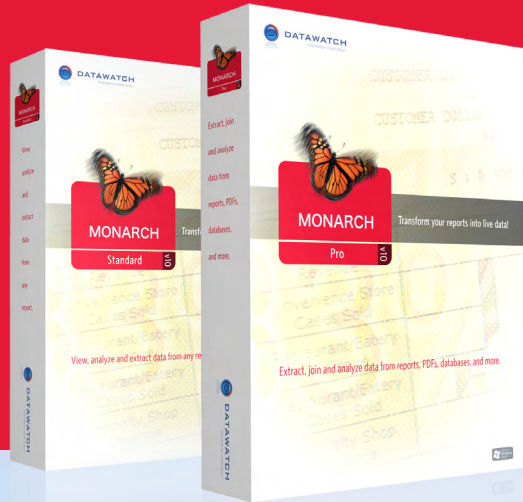


MONARCH™

v10



Unprecedented Excel Integration. Enhanced Model Building.
Breakthrough Analytic Power.

Get Ready...Get Ten...GO!



MONARCH™ 

Work Faster. Work Smarter.™ It's Easy with Monarch V10!

With Monarch V10, every major aspect of Monarch has been dramatically improved!

Excel Exporting

- + Export Data to Excel as Pivot Tables
- + Burst Summary Data: Export Separate Spreadsheet or Workbook for Each Key Value Change
- + Add Monarch Page Title to Exported Excel Files
- + Export Data to Excel 2007 XLSM Files and Access 2007 ACCDB Files

Analytics

- + New Multi-Level Crosstab Summaries
- + Point-and-Click Filtering: New "Value-Based" Data Filters
- + Table Verify Performs Data Quality Checks **PRO ONLY**
- + Easily Define Fiscal Year and Periods Customized to your Organization
- + Analyze Time Periods with 14 New Date Functions

Styling & Publishing

- + Huge Increase in Summary Data Coloring Options
- + Set Formatting Masks for Time Periods

Model Building

- + Auto-Define Report Trapping
- + Color-Coded Templates
- + Deal Effectively with Missing Report Append or Footer Data
- + Shift Individually Selected Fields or Trap Characters to Left or Right

New & Improved Data Sources **PRO ONLY**

- + Open PDFs 2x Faster
- + Print from any Windows Application and Import to Monarch using New Microsoft XPS File Format
- + Import Data from Excel 2007 XLSM Files and Access 2007 ACCDB Files

Experience the Unprecedented New Power of Monarch V10—

With Monarch V10 you'll build new model templates more easily than ever, discover exciting new analytic and styling capabilities, and experience the most powerful Excel exporting ever offered with Monarch.



Unprecedented Excel Integration

A new world of high-end, Excel-driven Business Intelligence is at your command!

Export Data to Pivot Table

Export Monarch table data as Pivot Tables with no work required in Excel! Simply select your desired data fields, row/column labels, values and style, and Monarch V10 generates customized, formatted Excel Pivot Tables. No other solution provides Excel-based BI as easily as Monarch V10!

The screenshot shows the 'Export Wizard - Excel Advanced Features' dialog box in the foreground. The 'Pivot Table' section is checked, and the 'Include Pivot Table sheet' option is selected. The 'Report Filter' is set to 'Month & Year', and the 'Column Labels' are set to 'Sales Organization'. The 'Row Labels' are set to 'Product Group' and 'Customer', and the 'Values' are set to 'Sum of Sale Amount'. A red arrow points from the 'Run' button to the background Excel window.

The background Excel window shows the 'PivotTable Tools' ribbon and a PivotTable. The PivotTable is titled 'Electronic Devices' and has the following data:

Month & Year	06/2008			
Sum of Sale Amount				
Row Labels	Customer	Column Labels		
		CND - Canadian Sales	DIR01 - Direct US Sales	USCEN - Central US Sales
Electronic Devices	LEH-CAR & COMPANY	11,983.50		899.25
	CARMICHAEL INTERNATIONAL	261.00	2,425.00	599.00
	123GO DISTRIBUTORS		300.00	
	PERFECT CIRCLE INTL		1,300.00	
	NEXTSTEP INTL	474.73	280.00	
	LILAC SYSTEMS			
	JACLYN GROUP			
	FIRSTSYS INTL			
	CM-XCEL COMPANY	3,839.42		
	NETSIMPLICITY WORLD			
	INNOMAXX			1,208.90
	WESTBRIDGE CO		1,380.00	
Electronic Devices Sum		16,558.65	5,685.00	2,707.15
Software	LEH-CAR & COMPANY	8,919.00		2,250.00
	CARMICHAEL INTERNATIONAL		429.00	179.00

the World's #1 Report Mining and Analysis Solution!

Monarch V10 is designed to dramatically improve your productivity, save you valuable time, empower you with even more Excel-based capabilities, and position you for success with effortless, programming-free reporting and Business Intelligence (BI).

Uncover the new and exciting features of Monarch V10 and Monarch Professional V10, and upgrade TODAY.

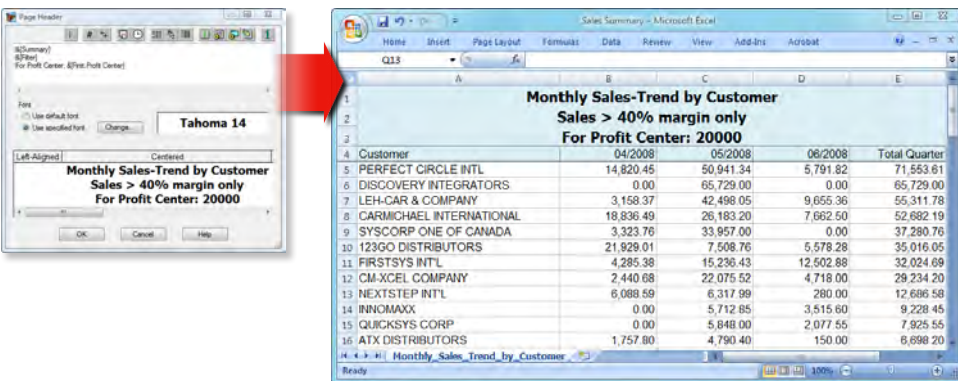
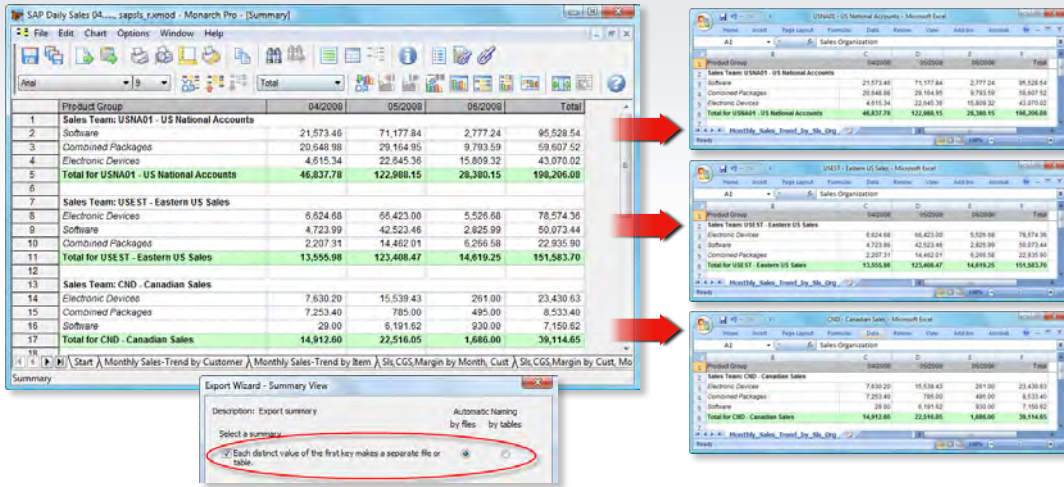
Burst Summary Data as a Separate Spreadsheet or Workbook for each Key Value Change

Now you can export summary data into separate spreadsheets or workbooks, based on changes in the left most key value. Export summary data as separate sheets within a single Excel workbook, or as standalone spreadsheet files within a specified folder. Perfect for "bursting" data by department, location, etc.

Add Monarch Page Title to Exported Excel Files

You can now export the page header in the Monarch page setup for the summary into the body of the exported worksheet.

Export Data to Office 2007 XLSM Files (Excel macro-enabled workbook) and Access 2007 ACCDB files.



Excel & Innovation



Analytics at your Fingertips

New filtering and summary capabilities, and much more, give you the unprecedented control you need to create customized data with a few clicks!

New Multi-Level Crosstab Summaries

Previous versions of Monarch allowed for only one summary measure to be displayed. Now you can display multiple measures across a summary, sorted by key or by measure. An entirely new variety of Monarch summary analyses is now possible, complete with optimized formatting when exported to Excel.

Month & Year	Product Group	Eastern Sales			National Accounts			Western Sales		
		Total Sales	COGS	Gross Margin	Total Sales	COGS	Gross Margin	Total Sales	COGS	Gross Margin
1 04/2008	Combined Packages	2,207.31	717.28	5,448.23	20,848.88	8,417.82	32,371.58	65.50	43.27	38.73
2	Electronic Devices	5,824.68	3,105.75	3,518.93	4,615.34	2,250.54	2,364.76	3,301.37	332.73	2,968.64
3	Software	4,723.99	682.04	4,041.95	21,973.46	12,964.45	9,409.09	9.00	0.00	0.00
4	Subtotal	13,555.98	4,535.07	9,020.91	46,837.78	22,782.81	24,654.87	3,368.37	361.00	3,065.37
5										
6	Combined Packages	14,482.01	3,993.10	10,488.83	29,164.95	13,912.48	15,252.47	1,134.74	569.19	565.55
7	Electronic Devices	96,423.00	25,899.99	46,736.82	22,445.26	12,221.69	10,423.68	9,719.52	4,992.84	4,725.68
8	Software	42,523.46	13,759.68	28,763.78	71,177.84	39,202.76	31,939.66	9,529.70	862.52	8,667.18
9	Subtotal	123,408.47	43,440.14	79,968.33	122,888.15	65,336.94	57,651.21	20,380.96	6,424.55	13,956.41
10										
11	Combined Packages	6,269.58	2,662.63	3,606.95	9,793.59	5,128.06	4,665.53	1,526.69	563.56	963.43
12	Electronic Devices	5,526.68	2,960.36	2,566.32	15,809.32	9,095.70	6,713.62	1,285.99	258.77	1,627.22
13	Software	2,825.99	1,424.84	1,401.55	2,777.24	867.03	2,138.29	0.00	0.00	0.00
14	Subtotal	14,619.25	7,047.83	7,574.82	28,380.15	14,889.79	13,499.36	2,812.68	622.33	1,390.65
15										
16	Summary	191,983.76	55,623.64	96,360.66	198,208.08	103,908.64	95,295.44	26,568.31	7,607.88	18,952.43

Point and Click Filtering with New "Value-Based" Data Filters

Select a field to filter and Monarch V10 will list all existing values in your data. Select any number of values and/or enter desired values (wildcard values supported); choose to display rows that do or do not meet your selected criteria, and more!

Display	Field Name	Type	Format	Width	Data Length	Alignment	Hide	Table Verify
1	SalesDate	Date/Time	Short Date	10			<input type="checkbox"/>	Date conversion error: 05/01/1008
2	Region	Character	General	26	26	Left	<input type="checkbox"/>	Excessive field length 26 - current maximum length 19
3	Sales Rep	Character	General	26	26	Left	<input type="checkbox"/>	
4	Region Code	Character	General	2	2	Left	<input type="checkbox"/>	
5	Customer Code	Character	General	4	4	Left	<input type="checkbox"/>	Truncated text values - original: 054-1/11, current: 854-
6	Customer Name	Character	General	30	30	Left	<input type="checkbox"/>	
7	City	Character	General	23	23	Left	<input type="checkbox"/>	Excessive field length 23 - current maximum length 20

Field Values: Advanced

Filter Name: Select Healthcare Insurers

Field: Insurer Name

Values:

Select	Value (Character)
<input checked="" type="checkbox"/>	FIRSTGUARD HEALTH PLAN
<input checked="" type="checkbox"/>	HEALTHNET HMO/EPO GEN
<input type="checkbox"/>	HEALTHNET PPO
<input type="checkbox"/>	MC+ FIRSTGUARD
<input type="checkbox"/>	MEDICAID-FLORIDA
<input type="checkbox"/>	NEVADA MEDICAID

Row Selection:

- Include rows where the field value matches one of the selected values.
- Include rows where the field value does not match any of the selected values.
- Include rows where the field value is null or empty.

Buttons: Select All, Add, Delete, Clean Values List, Add current field values, Filter: No Filter

14 New Date Functions let you easily define fiscal periods, time periods matching ISO standards, etc. Your Monarch report work will now perfectly match with your organization's unique policy regarding time intervals.

PRO ONLY **New Table Verify** performs data quality checks, whether mined from reports or imported from another source. Users are alerted to any data errors.

New Monarch V10 Date Functions

- ▶ CalendarWeek
- ▶ FiscalWeek
- ▶ FiscalDayOfYear
- ▶ FiscalHalfYear
- ▶ FiscalPeriod
- ▶ FiscalQtr
- ▶ FiscalHalfYear
- ▶ FiscalYear
- ▶ FirstDay
- ▶ LastDay
- ▶ ISODayOfYear
- ▶ ISOWeekDay
- ▶ ISOWeek
- ▶ ISOYear

Data Quality Checks Performed by Monarch Pro V10

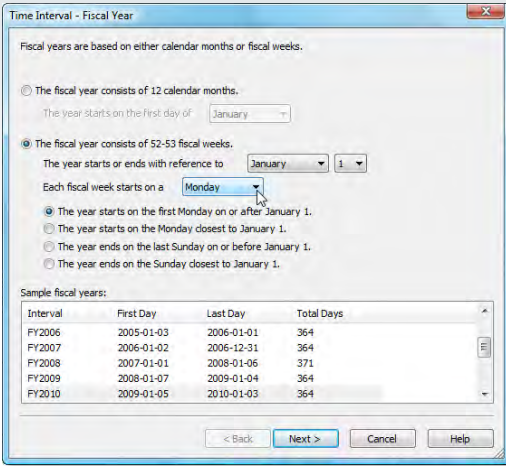
- ▶ Rounding differences for numerics
- ▶ Data conversion errors while converting strings to numerics and dates
- ▶ Numeric out of bound errors
- ▶ Null values in database columns
- ▶ Truncation of text in delimited text imports
- ▶ Loss of data due to insufficient date formatting
- ▶ Check whether calculated fields have null values
- ▶ Check for excessive text field lengths

Easily Define Fiscal Year and Periods as dictated by your organization for powerful date-based analysis.

Hide Accumulated Unmatched Values ("All Others") Summary Line

Hide Measure Total Column for Across Key Summaries while still displaying individual row summary data.

For any summary using matched values (such as when creating a "Top 10/Top x" summary), you may choose not to display the "All Others" row containing all unmatched values.



BEFORE

Doctor	Amount
1 9 LASTER H MD	108,324.00
2 19 KOSKELLA F MD	93,763.50
3 8 WILSON MD	85,000.00
4 5 PAULS TWJ MD	59,651.00
5 23 SETO MJ MD	57,291.00
6 18 STEVENS T MD	54,022.50
7 27 ANDREWS MD	51,210.00
8 26 KELLEY WR MD	45,810.00
9 13 DOMINCO J MD	42,063.00
10 17 CASTLE JP MD	39,957.00
11 All Others	102,747.50

BEFORE

AFTER

Doctor	Amount
1 9 LASTER H MD	108,324.00
2 19 KOSKELLA F MD	93,763.50
3 8 WILSON MD	85,000.00
4 5 PAULS TWJ MD	59,651.00
5 23 SETO MJ MD	57,291.00
6 18 STEVENS T MD	54,022.50
7 27 ANDREWS MD	51,210.00
8 26 KELLEY WR MD	45,810.00
9 13 DOMINCO J MD	42,063.00
10 17 CASTLE JP MD	39,957.00

AFTER

BEFORE

Account Number & Description	01/2008	02/2008	03/2008	TOTAL
50010-Salaries	131,361.67	383,851.76	120,718.01	635,931.44
50020-Regular Pay Hourly	18,618.58	32,913.75	9,148.98	60,681.31
50030-Overtime Pay Hourly	3,879.92	3,891.28	826.76	7,798.96
50040-Auto Allowance	5,032.06	14,523.38	4,141.12	23,696.54
50050-Coverdnta-Sick, Vacation	1,748.56	3,440.43	959.19	6,148.15
50010-Insurance Medical/Dental	3,143.82	9,430.88	3,719.00	16,293.69
50040-Insurance Workers Comp	381.20			381.20
50030-Employee Benefits Union	76.24	219.56	86.29	382.10
50010-Emp Retention Taxable	22,477.29			22,477.29
50100-401K Contribution	2,428.59	4,460.49	4,222.10	11,111.18

BEFORE

AFTER

Account Number & Description	01/2008	02/2008	03/2008	TOTAL
50010-Salaries	131,361.67	383,851.76	120,718.01	635,931.44
50020-Regular Pay Hourly	18,618.58	32,913.75	9,148.98	60,681.31
50030-Overtime Pay Hourly	3,879.92	3,891.28	826.76	7,798.96
50040-Auto Allowance	5,032.06	14,523.38	4,141.12	23,696.54
50050-Coverdnta-Sick, Vacation	1,748.56	3,440.43	959.19	6,148.15
50010-Insurance Medical/Dental	3,143.82	9,430.88	3,719.00	16,293.69
50040-Insurance Workers Comp	381.20			381.20
50030-Employee Benefits Union	76.24	219.56	86.29	382.10
50010-Emp Retention Taxable	22,477.29			22,477.29
50100-401K Contribution	2,428.59	4,460.49	4,222.10	11,111.18

AFTER

Publish and Export with Style

New Excel publishing, summary coloring and date period formatting streamline and simplify report styling.

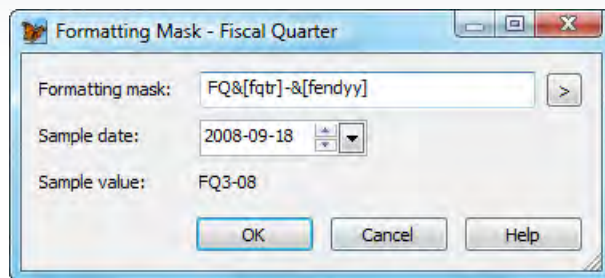
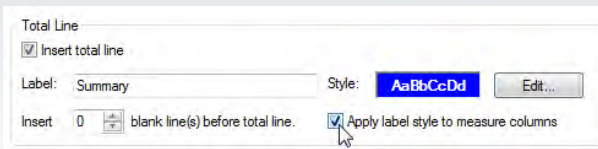
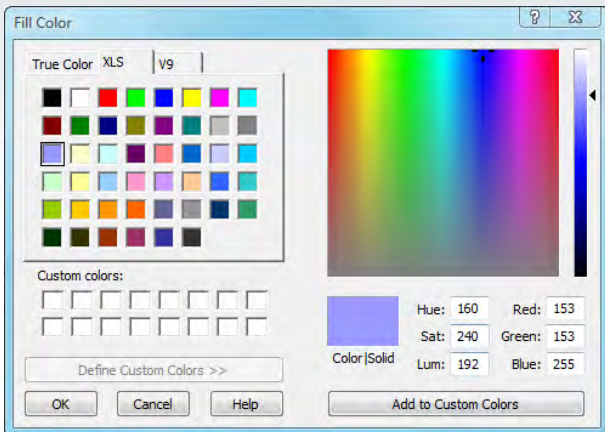
Huge Increase in Summary Data Coloring Options

Choose from standard colors or select from the custom color palette for summary coloring. Choose from 54 colors for Excel XLS exporting, and 64,000 colors when exporting to XLSX format!

You can also apply formats for summary key coloring to related measures, or apply grand total and subtotal key coloring to all measure columns.

Set Formatting Masks for Desired Time Intervals

Easily define how time intervals are displayed.



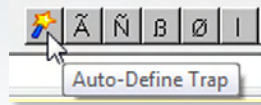


Model Building Just Got Even Easier

Building model templates is more intuitive than ever—Monarch V10 will even help define traps for you!

Auto-Define Report Trapping

Getting started on defining a trap is dramatically simplified. Check off sample lines from the report for which you want to build a template. Monarch V10 will generate a trap based on the common features of the report lines selected.



Line	Target	Employee Name	Date	Pos Hrs	Type	Gross Pay	Tax
1							
2							
3		1100023 ANDERSON, PAUL	04/14/08	87652	A.C.H.	4,581.35	
4		Earnings	Hours	Amount	Tax Ded	Amount	Taxable
5	<input checked="" type="checkbox"/>	REGULAR	64.00	3,665.96	FED WH	626.46	5,064.63
6	<input checked="" type="checkbox"/>	VACATION	16.00	915.39	MEDICARE	71.78	4,064.63
7	<input checked="" type="checkbox"/>				MA WH	260.57	4,064.63
8	<input checked="" type="checkbox"/>						
9	<input checked="" type="checkbox"/>	ACH Distribution	Bank ID	Bank Account Number	Deposit Amount	Description	
10	<input checked="" type="checkbox"/>		99999723	9999928	3,075.13	ACH	
11							
12							
13		1105029 SMYTHE, MELISSA A	04/14/08	87458	A.C.H.	1,050.00	992.42
14		Earnings	Hours	Amount	Tax Ded	Amount	Taxable
15	<input checked="" type="checkbox"/>	REGULAR	80.00	1,050.00	FED WH	101.84	992.42

Using the report lines you select...

Employee Name	Date	Pos Hrs	Type	Gross Pay	Fed Taxable	Soc Sec Txml	Medicare Txml
1100023 ANDERSON, PAUL	04/14/08	87652	A.C.H.	4,581.35	4,064.63	0.00	4,064.63
REGULAR	64.00	3,665.96	FED WH	626.46	4,064.63	5.00	MEDI CO*
VACATION	16.00	915.39	MEDICARE	71.78	4,064.63	28.00	FUI*
			MA WH	260.57	4,064.63	29.03	LIFE BA*
						457.69	ADAD*
						18.26	SDP*
							274.62

...Monarch defines your trap for you!

Define "Sticky Note" Bookmark Comments

When creating a bookmark, you can now also add a "sticky note" comment. Plus, when republishing reports to PDF, all bookmarks will be included.

DATE 7 JUL 2008 RPT101 S & R SODA POP DISTRIBUTORS INC. 12 MONTHS SALES ANALYSIS

SALESMAN 15012 JONES, LOUIS

	JAN	FEB	MAR	APR	MAY	JUN	JUL	AUG	SEP	OCT
CUSTOMER	5620	FRIENDLY STORE								
GROUP	2717	CARMICHAEL FLAVORED ICED TEAS								
	1.3				1.0	1.0	2.0		1.0	2.0
	2.6	2.0	2.0	1.0	4.0	1.0	2.1		3.0	3.0
	290	254	302	151	542	88	181		378	304

Customer has special pricing for 2008 as approved by Sarah and Rachel

Bookmark Comment: Customer has special pricing for 2008 as approved by Sarah and Rachel

Prompt for comment when adding bookmarks

Advanced Field Properties Enabled for Floating Fields

You can now mine floating field data spanning multiple report lines using Advanced Field properties with floating fields.

Field Properties - Floating Trap Field

General Advanced

Start Field On

Line number 1

String: [] anywhere in previous line

Preceding string: [] in current line

After last defined field in template

End Field On

Fields always end on a new template or HTML markup line. There can be an additional stop condition as follows:

Line count: 1

Nonblank preceding string of 0 characters

Blank field values: 1

End of left Justification.

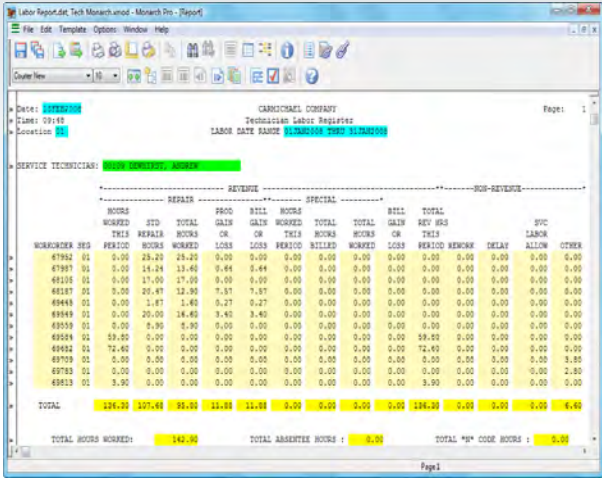
None of the above

By default, fields start and end on a specific line number. Use the other conditions above for text containing varying start lines or paragraphs.

Reset

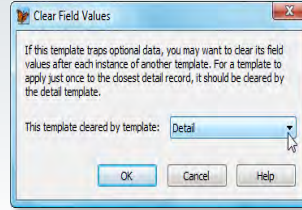
OK Cancel Help

Color-Coded Templates help expedite model building. Choose a custom background color for each template type.



Deal Effectively with Missing Report Append and Footer Data

Sometimes desired append levels or footer data are missing from your report. Previously, Monarch would simply copy the value from the previous instance of the append or footer template, yielding undesired results. Now, you can conditionally suppress append data to ensure complete data integrity.



Auto-Trim Option will always remove leading and trailing spaces from character and memo data fields. There is no need to manually create calculated fields to accomplish the same thing!

Trim leading and trailing spaces from Character and Memo fields.

Shift Individually Selected Fields or Trap Characters to Left or Right

Previous versions of Monarch let you shift an entire template to the left or to the right to compensate for slightly modified reports, such as report data moving a few spaces to the left or to the right. Frequently only a single "object" within the report has moved. With Monarch V10 you can now move individual fields or trap characters based on the location of your cursor.

Model Building



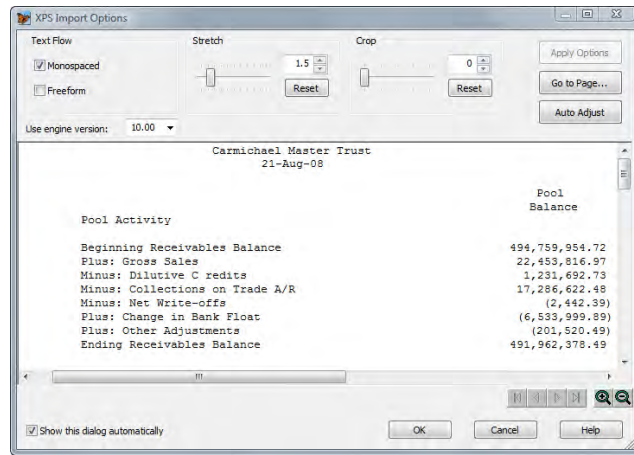
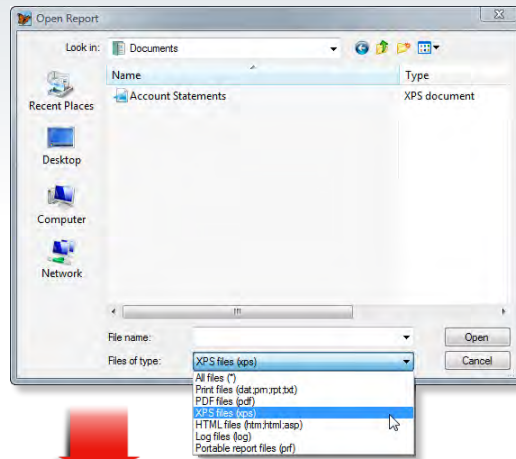
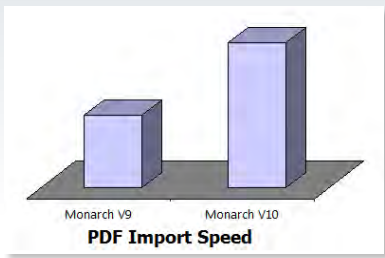
New & Improved Data Sources PRO ONLY

Dramatically improved PDF import speed along with brand new data sources let you get more done—faster!

Open PDFs 2x Faster and save significant time especially when working with PDF reports containing thousands of pages!

Print from any Windows Application and import to Monarch using new Microsoft XPS file format. XPS (XML Paper Specification) is a new file format similar in publishing capabilities to PDF. The ability to save as XPS is included with Microsoft .NET Framework 3.0 (free from Microsoft), Microsoft Vista or Office 2007. Monarch Professional V10 can now import XPS files in a similar way to PDF import. Any report or business document accessible using Windows can now be exported to XPS for mining with Monarch V10 Professional.

Import Data from Excel 2007 XLSM Files (Excel macro-enabled workbook) and Access 2007 ACCDB files.



New Feature List for Monarch V10 and Monarch Professional V10

NEW TO BOTH MONARCH AND MONARCH PROFESSIONAL:

Report Window

- + Auto-Define Report Trapping
- + Color-Coded Templates
- + Deal Effectively with Missing Report Append or Footer Data
- + Shift Individually Selected Fields or Trap Characters to Left or Right
- + Define “Sticky Note” Bookmark Comments
- + Advanced Field Properties Enabled for Floating Fields

Table Window

- + Export Data to Pivot Table
- + Point-and-Click Filtering: New “Value-Based” Data Filters
- + 14 New Date Functions

Summary Window

- + Burst Summary Data; Export Separate Spreadsheet or Workbook for Each Key Value Change
- + New Multi-Level Crosstab Summaries
- + Add Monarch Page Title to Exported Excel Files
- + Hide Measure Total Column for Across Key Summaries
- + Hide Accumulated Unmatched Values (“All Others”) Summary Line
- + Choose from Standard Colors or the Custom Color Palette for Summary Coloring
- + Apply Formats for Summary Key Coloring to Related Measures, or Apply Grand Total and Subtotal Key Coloring to all Measure Columns

Table and Summary Window

- + Export Data to Excel 2007 XLSM Files
- + Export Data to Access 2007 ACCDB Files

General

- + Easily Define Fiscal Year and Periods Customized to your Organization
- + Set Formatting Masks for Desired Time Periods
- + Auto-Trim Option

NEW TO MONARCH PROFESSIONAL:

- + Open PDFs 2x Faster
- + Import Data from Microsoft XPS Files
- + Import Data from Excel 2007 XLSM Files
- + Import Data from Access 2007 ACCDB Files
- + Table Verify Performs Data Quality Checks

MONARCH™



Upgrading is easy! BUY Monarch V10 TODAY!

Upgrade to Monarch Standard V10 or Monarch Professional V10 NOW by contacting Datawatch or your local reseller.

Work Faster. Work Smarter.™ It's Easy with Monarch V10!

Monarch V10 Minimum Requirements

- + Windows XP Home/Professional SP2, Windows 2003 Server SP1 (SP2)*, Windows Vista (SP1)*, Windows 2008 Server
- + 1GB (2GB)* RAM
- + 200 MB disk space for installation
- + Pentium 4 CPU (or higher)*
- + 16-bit (32-bit)* color display
- + Internet Explorer 6 (7)*
- + NET Framework 3.0 (SP1)*
- + Microsoft Office XP/2003 or XP/2003 Web Component for HTML exports

*Recommended

Monarch V10 Installation and Compatibility

- + Monarch V10 installs in minutes and can read model files, project files and portable report files created with earlier versions of Monarch.

Note: Monarch Professional is a 32-bit application and can also run on 64-bit Windows operating systems.

Upgrade Paths

- + Monarch Standard Edition V9 to Monarch Standard Edition V10
- + Monarch Professional Edition V9 to Monarch Professional Edition V10
- + Monarch Standard Edition V9 to Monarch Professional Edition V10

If you are upgrading a multi-user network, contact Datawatch for details.

IMPORTANT NOTE: In order to successfully perform the upgrade to Monarch Version 10, you must have an earlier version of Monarch installed on your system.

Datawatch Corporation
www.datawatch.com



DATAWATCH
Information made easy.™

©2008 Datawatch Corporation. All rights reserved. Monarch and Monarch Pro are trademarks of Datawatch Corporation. Microsoft, Excel and Windows are either trademarks or registered trademarks of Microsoft Corporation in the United States and/or other countries. All other company or product names are trademarks or registered trademarks of their respective owners.