



## Safely access and share information at home, at work and on the road!

The need to connect a computer to different networks is growing. We expect to be able to connect and work from wherever we are. The benefits are obvious, but the technical complexity for the end-user is increasing. We need more than just a movable laptop. We need our laptop to connect to the Internet, corporate LANs and home networks. And to do this securely we need to deal not only with the connectivity barriers but also with enabling, disabling and configuring VPNs, personal fire-walls, proxies, e-mail clients etc.

**MultiNetwork Manager** is a software that facilitates secure access and share of information for mobile computer users. It has an easy to use interface with guides that will make your connection quick, easy and secure no matter which access method you use (WLAN, LAN ISDN, DSL, GPRS etc.).

### 1 Get connected, access and share

Often on the move and would like to connect from wherever you are? One of the main features of MultiNetwork Manager is to provide a laptop user with instant Internet connection and access to information independent of location.

You can make instant:

- *Wireless connections/Wired connections*
- *Dial-up connections (ISDN, GPRS, UMTS/3G)*
- *Connection to other networks*
- *PC-to-PC/File sharing over the Internet*

### 2 PC-to-PC connection/File sharing

Have you ever felt that you would like to transfer information between two computers? For example, if you have purchased a new computer you may like to transfer files to it from your old one. You may do this wireless/wired or PC-to-PC, and MultiNetwork Manager will make sure it is done securely.

### 3 Wireless access points in range

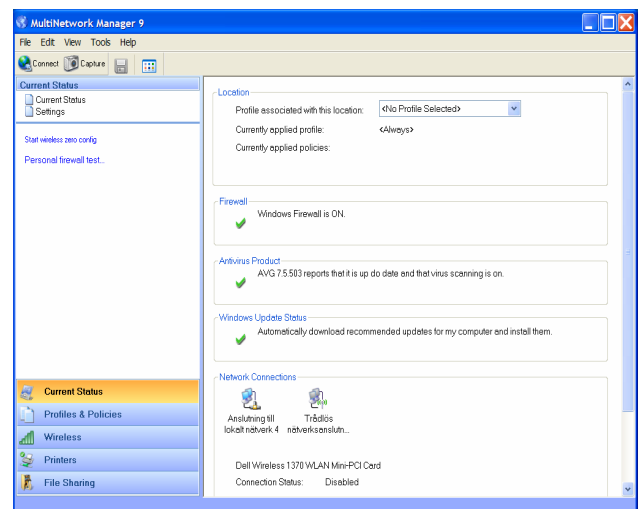
Need to connect wirelessly quickly? MultiNetwork Manager is also a complete WLAN client supporting all brands of WLAN adapters. It will display all wireless access points available, e.g. different Internet service providers, company or home WLANS in a range. You can easily access and switch between them by clicking in a list.

### 4 Quickly switch between networks using location profiles

You may have been at a customer site or for any other reason had your computer reconfigured with the assistance of an IT administrator. When returning to your ordinary work place or situation, the configuration changes made to your computer can cause you to be unable to connect to the network or reach your resources. With MultiNetwork Manager you may store your configurations into profiles for later re-use. MultiNetwork Manager will let you choose or even suggest the appropriate profile (location sensing).

### 5 Always stay secure

MultiNetwork Manager will warn you if your firewall is not enabled or if your anti-virus program is not up to date when connecting to a new location. A specific screen will show you the current security status of your computer. Wizard-guides will help you to enable the firewall or block the file sharing when you connect to a new network. You can also choose to save your security settings into profiles.



## MultiNetwork Manager 9

MultiNetwork Manager 9 is targeted for both individuals, home and business users, who want to explore the benefits of MultiNetwork Manager for personal use, as well as IT administrators and professionals.

The new MultiNetwork Manager 9 contains the necessary functionality required to connect securely and instantly to dial-up, wired and wireless networks as well as functionality to share and access information without any trouble. Besides being fully Vista compatible, the functionality and user interface of MultiNetwork Manager 9 has been enhanced to provide ease of use and powerful features for both less experienced and expert users. MultiNetwork Manager 9 is GlobeSoft's comprehensive high-end offering, making it even more cost effective and safer to roll out MultiNetwork Manager to a large population of users. It offers more functionalities and configuration possibilities compared to previous versions of MultiNetwork Manager.

### Examples - Features:

#### Security:

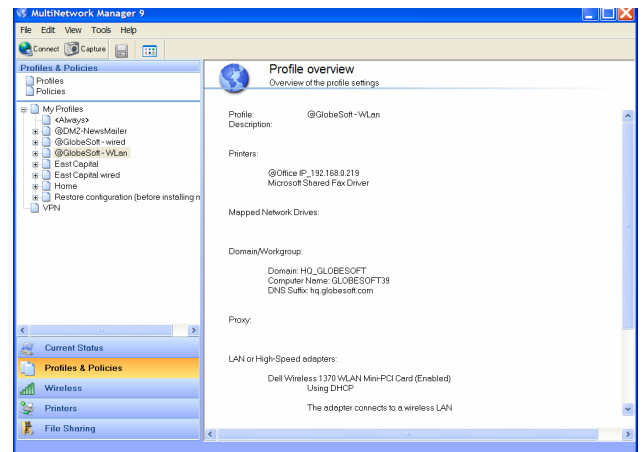
- Makes it easier to use VPN by creating a VPN-profile that can be enabled/disabled in one click
- Configure other network applications to use Proxy servers auto discovered by MultiNetwork Manager (e.g. NAV updates)

#### Access:

- Manage multiple domain and workgroup accounts
- Manage multiple e-mail accounts and settings

#### Administrative benefits:

- Create and update profiles centrally and push them out to remote users.
- Manage all WLAN adapters with one common client



#### MMN 9 Key Features

- One click connect
- Auto detection and connection settings
- Automatically enable/disable file sharing or PFW
- Configure global and profile based security rules
- Distribute WLAN security for known connection points
- Integrate diallers such as iPass
- Location Sensing and automatic application of profiles
- Push Profiles
- Import/Export profiles
- Capture settings into profiles
- VPN Control
- File sharing peer-to-peer and over the Internet
- One common interface for all connectivity and security needs

#### System requirements

- Microsoft Windows 2000/XP/XP-Tablet/VISTA
- Pentium class computer
- 128 MB RAM
- 10 MB of free space on hard drive
- 10/100/1000 Ethernet NIC
- For wireless support, XP-compatible WLAN adapter is required (NDIS5.1)

#### MMN 9 Key Components

- TCP/IP
- DUN (Dial-Up)
- Proxy
- Domain/Workgroup
- Map Network Drives
- Printers
- Run scripts
- Environment
- Registry
- WLAN (WEP/WPA/WPA2\*/WPA-PSK etc.)
- E-mail client
- Firewall Control
- AntiVirus Control
- Profile management
- Internet options

**Considering a deployment in your company?  
Please contact GlobeSoft for evaluation licenses.  
We are happy to assist you during your evaluation  
process.  
E-mail: [sales@globesoft.com](mailto:sales@globesoft.com)**